



WENDIS VIEWER 5
- USER MANUAL -



Contents

1. About.....	5
2. System Requirements	5
3. Feature Overview	6
3.1 AVCS – ADMIRALTY Vector Chart Service	6
3.2 AENP – ADMIRALTY e-Nautical Publications.....	6
3.3 ADP – Admiralty Digital publications	6
3.4 AIO – ADMIRALTY Information Overlay	6
3.5 Passage planning.....	6
3.6 NAVAREA warnings	6
3.7 Environmental module	7
3.8 Load Lines.....	7
3.9 Time Zones	7
3.10 Auto-routing.....	7
3.11 Paper chart catalogue	7
3.12 Sensor Data service	8
4. Installation	9
5. Activating WENDIS Viewer.....	13
5.1 Activating via Internet.....	13
5.2 Activating via Email	14
6. Setting up your vessel	16
6.1 Online/Offline	16
6.2 Subscription	16
6.3 Charts	16
6.3.A Default ENC License	16
6.3.B ENC update corridor	16
6.3.C Safe Depth.....	16
6.4 Vessel	16



6.5 Route	16
6.6 Auto-Route Settings	16
6.7 NMEA Settings	17
6.8 Version	17
6.9 Help and Support	17
7. Charts	18
7.1 Preinstalling Charts	18
7.2 Appearance	19
7.3 Updating charts via internet	19
7.4 Updating charts via email	22
7.5 WENDIS Update for PAYS.....	24
7.6 Creating an order	24
7.7 Editing orders	25
7.8 Placing an order via internet.....	26
7.9 Placing an order via email	28
8. Routes & Areas.....	30
8.1 Manual Routes	30
8.2 Using Auto-route.....	32
8.3 Importing and exporting routes.....	37
8.3.A Exporting routes	37
8.3.B Importing routes	37
8.4 Route Optimization	38
Initial setup	38
Requirements for optimization.....	39
Creating an optimization request	39
Optimization Restriction Areas	41
Submitting an optimization request	42
Downloading optimized result.....	43



Optimized route details	44
8.4 Areas	47
9. Weather	Error! Bookmark not defined.
Changing time.....	52
Changing opacity.....	53
10. Layers	54
11. AENP.....	55
12. ADP.....	56
12.1 Ordering of ADP	56
12.2 Viewing ADP	58
12.3 Updating ADP	59
13. NavArea.....	60
14. Paper chart catalogue	61
15. Exporting Exchange Sets	62
16. Email updating	63
17. Support.....	66
17.1 Make Support Message	66
17.2 Explore data folders	67
17.3 Connection test page	67



1. About

WENDIS Viewer is an all-in-one solution for marine navigators to manage back of bridge operations on ships in one easy to use platform.

An information management tool for the maritime industry, it prepares navigation for both small ships and large enterprises.

As well as being invaluable on board vessels, WENDIS Viewer is also used shore side in planning and reviewing routes. Our online system allows shipping companies to quickly and easily approve orders and see what information their vessels have access to.

Extra add-on services and functionality are available in WENDIS Viewer for a totally expandable solution, including AVCS, NAVAREA Warnings, Load Lines, Time Zones and Weather data.

2. System Requirements

System Requirements:

- Windows 10 or Windows 11
- Currently supported release version
- Processor: Minimum 1GHz 2-core processor (64-bit)
- Memory: Minimum 4GB; 8GB RAM preferred
- Disk: Minimum 64GB hard disk; for PAYS usage, a 128GB disk is preferred

Dependencies

The product requires version 8.0.8 or later of Microsoft .Net Desktop Runtime (x64). It can be downloaded from here: <https://dotnet.microsoft.com/en-us/download/dotnet/8.0>

The “.Net Desktop Runtime” installer includes “.Net Runtime”; there is no need to install “.Net Runtime” separately.

Installation

Run the supplied installer. If prompted to install Microsoft .Net Desktop Runtime (x64) please download and install the latest version from the link above, then re-run the installer for the Viewer application.



3. Feature Overview

3.1 AVCS – ADMIRALTY Vector Chart Service

A unique service for AVCS charts. Existing charts can be installed and viewed, or charts can be acquired using our Pay-As-You-Need service.

You can update the ENC charts free of charge each week and update the ECDIS by making a standard exchange set.

3.2 AENP – ADMIRALTY e-Nautical Publications

Having AENP integrated into WENDIS Viewer, allows operators to download and apply the latest UKHO updates to publications electronically.

This is an important feature as it helps to support safety and compliance, as well as reducing administration on board the vessel.

3.3 ADP – Admiralty Digital publications

WENDIS Viewer provides full integration with the installed Admiralty ADP software, the operators of the software are able to preview the exact same data that is available from the Admiralty Totaltide, Admiralty list of lights, Admiralty Radio Signals 6, Admiralty Radio Signals 2 and Admiralty Radio Signals 1,3,4,5 directly through the WENDIS Viewer. There is no need to have multiple software applications open on the same time anymore.

3.4 AIO – ADMIRALTY Information Overlay

WENDIS Viewer displays AIO to provide the operator with the most up to date information possible. It simplifies planning by giving mariners the right information when they need it.

It displays ADMIRALTY Temporary and Preliminary Notices to Mariners (T&P NMs) and ENC Preliminary Notices to Mariners (EP NMs) on top of ENCs.

3.5 Passage planning

WENDIS Viewer routes provide a full overview of route waypoints, legs, speed and predicted times and is based on our AtoBviaC service.

The passage planning tool allows you to easily share routes between the vessel, shipping companies or charters, to ensure safer navigation.

A printable passage plan (route details, ENC update state, ADP certificate) is also available.

3.6 NAVAREA warnings

Embed NAVAREA warnings into voyage plans to see warnings on your routes and avoid any potential dangers, to save time, stay up to date and keep the vessel and its crew safe.



3.7 Environmental module

ECA and MARPOL zones are highlighted, so routes may be planned around them. Knowing where zones are in your schedule can make a difference in compliance, time and cost.

Routes can be planned to avoid changing fuel or to take the additional time and costs involved into consideration.

3.8 Load Lines

Overlay routes with Load Lines to stay compliant with Load Line regulations: the perfect partner when sailing long journeys.

Data from the International Convention on Load Lines 1966 and Protocol of 1988 (as amended in 2003) are summarized in this layer. The layer outlines Summer, Winter and Tropical Zones, Seasonal Areas and their Fresh Water equivalents.

3.9 Time Zones

Overlay routes with Time Zones for the perfect partner when sailing long journeys and sailing multiple routes.

Integrate ADMIRALTY chart 5006 with a digital version in Viewer to eliminate carrying the paper chart. The chart enables mariners to see where and when the time zones change on routes and the time zones for ports to help with reporting.

3.10 Auto-routing

Automatically generate routes using the integrated routing engine that has a database of thousands of ports worldwide.

3.11 Paper chart catalogue

The WENDIS Viewer enables the mariner to preview the Admiralty digital paper chart catalogue.

This catalogue can together with the rest of the Viewer catalogues be used in lieu of NP 131.

Paper chart NTMs are provided separately via. Admiralty website or Weilbach PCUM.



3.12 Sensor Data service

The WENDIS Viewer enables the vessel position to be uploaded to the chart viewing screen by receiving NMEA sentences over local network (via. UDP), which is broadcasted by the Sensor Data service application (installed separately)

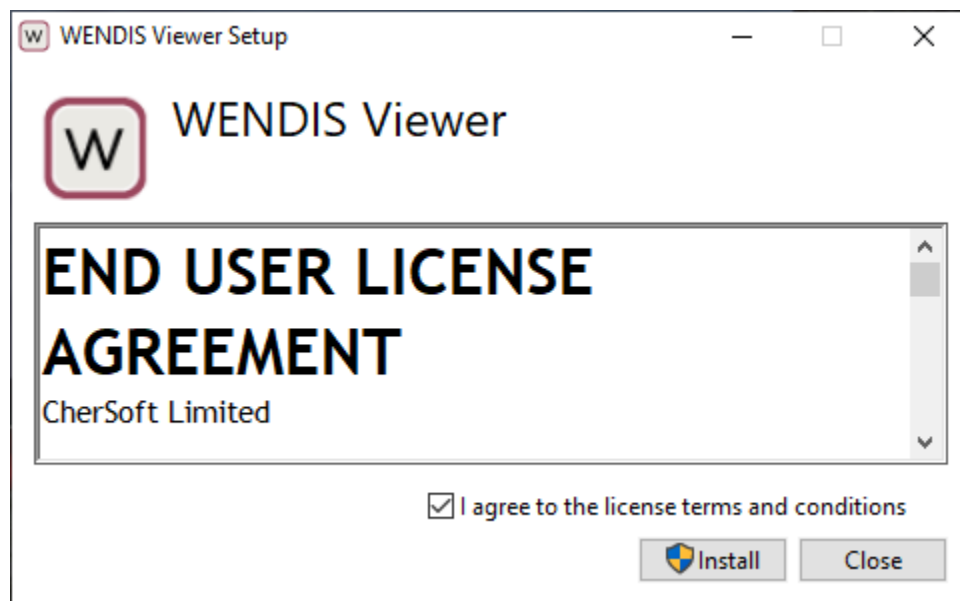
Sensor data service enables the vessel to:

- display own ship's position on the chart based on GPS NMEA sentences
- display AIS class A and B targets on the chart
- display a list of AIS targets including bearing and range from the own ship



4. Installation

1. Start the installation process by running WENDISViewerSetup.exe. You should receive a prompt as the screenshot below. Set a check in the terms and conditions, and click Install to start the installation. Please note that this requires admin privilege.

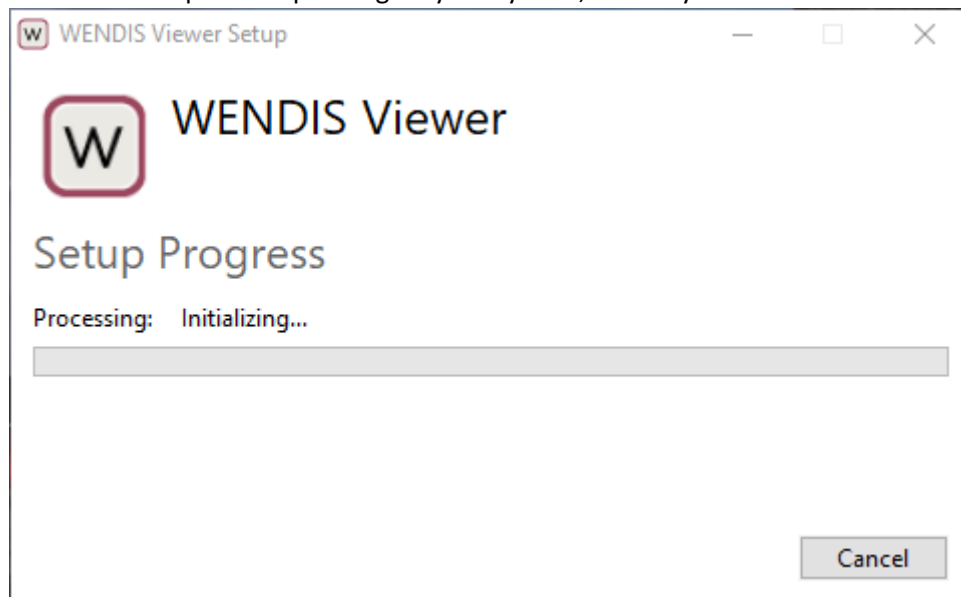




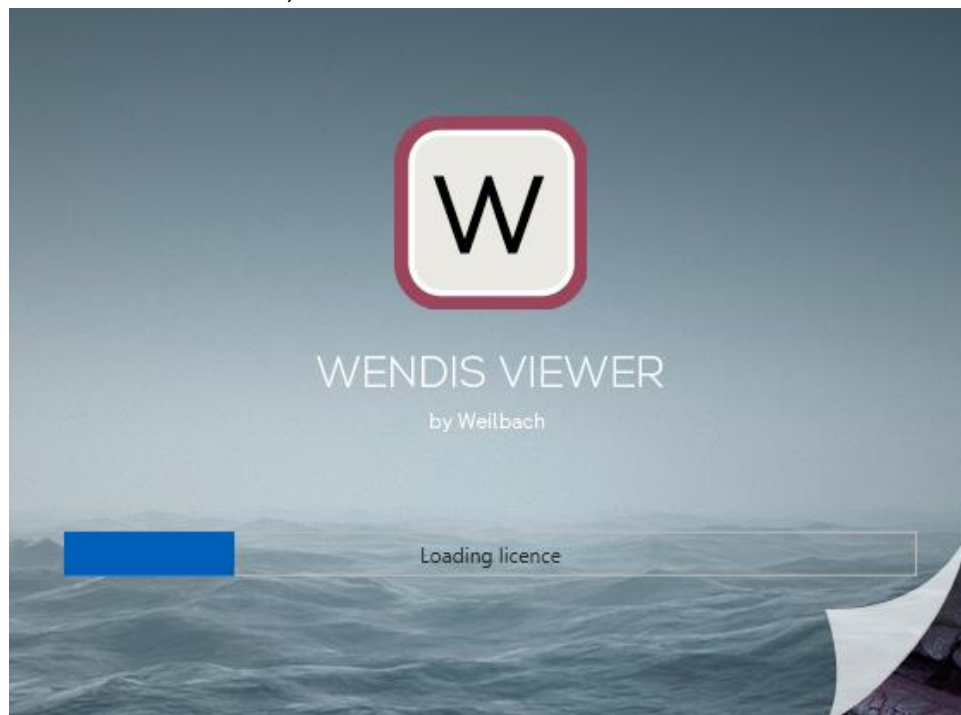
Weilbach®

NAUTICAL INSTRUMENTS DATA
CHARTS & BOOKS

2. Let the installation complete. Depending on your system, this may take a few minutes.



3. Once the installation is complete a WENDIS Viewer shortcut should have been generated on the desktop. To run WENDIS Viewer, double-click the icon.

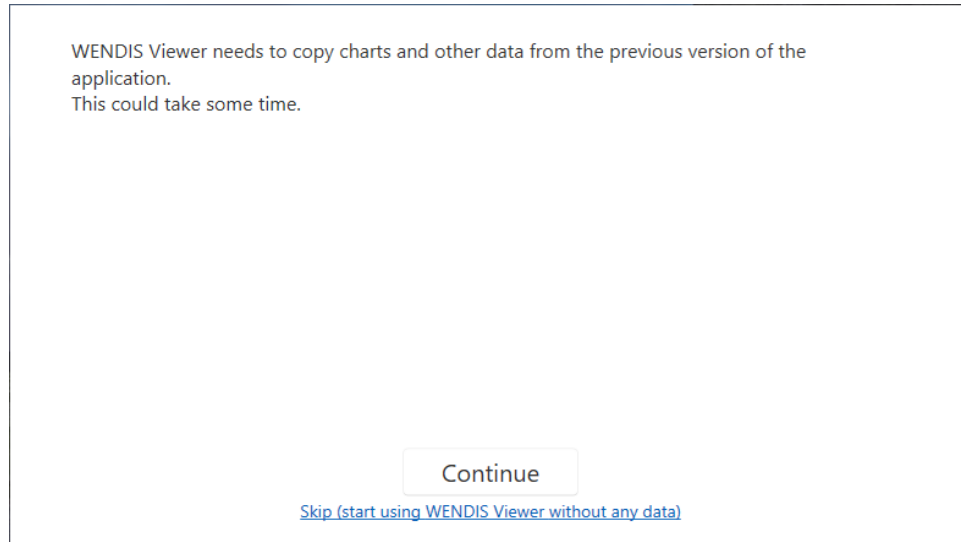




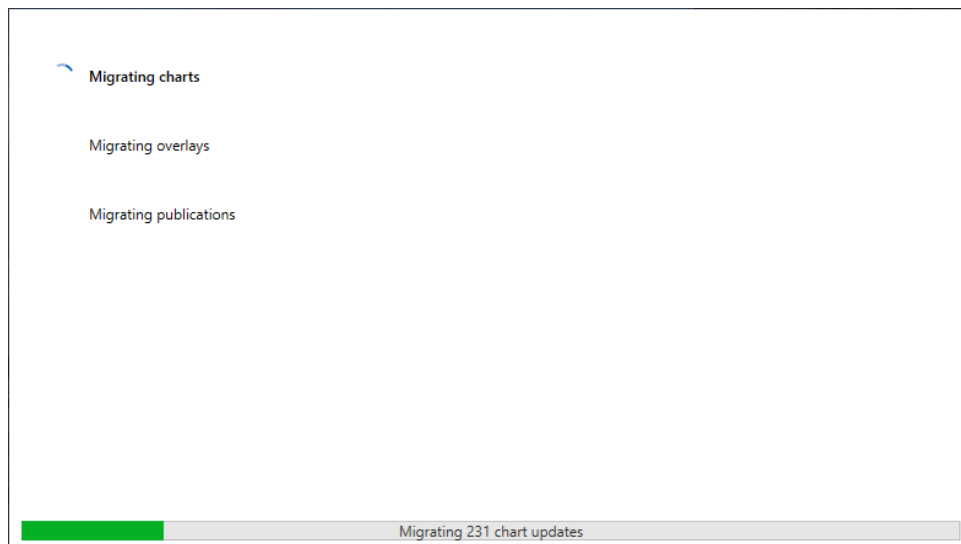
Weilbach®

NAUTICAL INSTRUMENTS DATA
CHARTS & BOOKS

4. The first time you open WENDIS Viewer 5, you will see a prompt as below. Press *Continue* to migrate your data from WENDIS Viewer 4.x, to WENDIS Viewer 5. If this is a clean installation of WENDIS Viewer 5, click *Skip*.



5. Depending on your system and the number charts/AENP currently downloaded the migration may take a few minutes. Please allow the migration to complete, and do not shutdown or restart the computer during the migration.

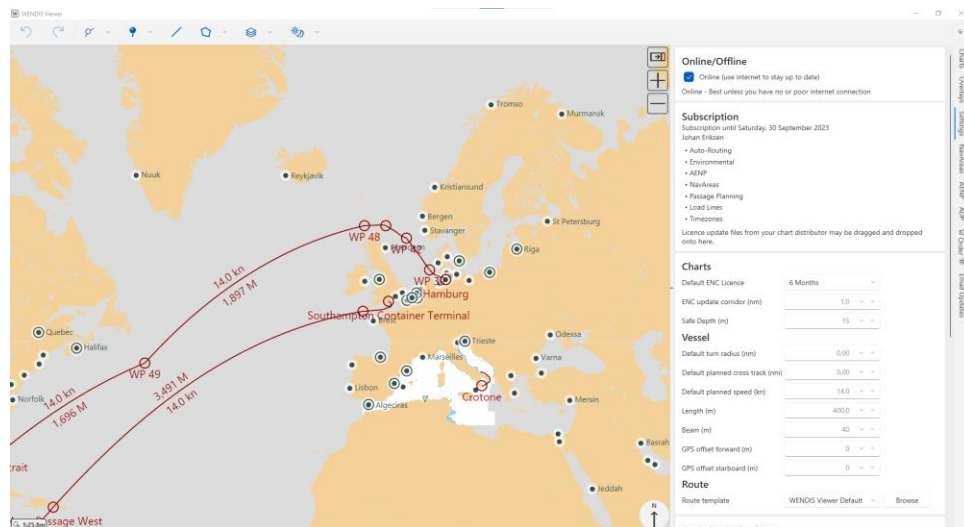




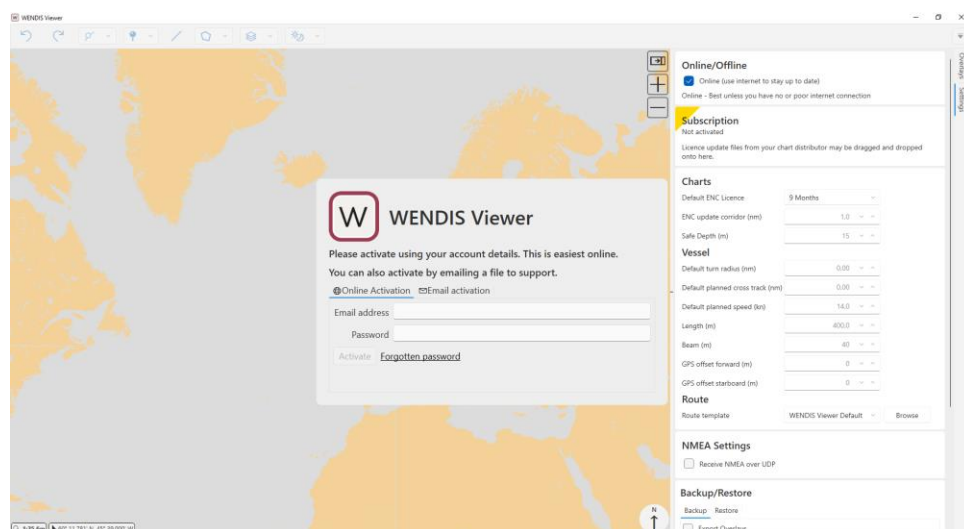
Weilbach®

NAUTICAL INSTRUMENTS DATA
CHARTS & BOOKS

6. If your data was successfully migrated, you should be able to resume where you left of, with all your routes, charts and AENPs intact.



7. If this is a clean install, you will be prompted with an activation window as shown below. Please reach out to operations@weilbach.com, if you do not know your sign-in details.

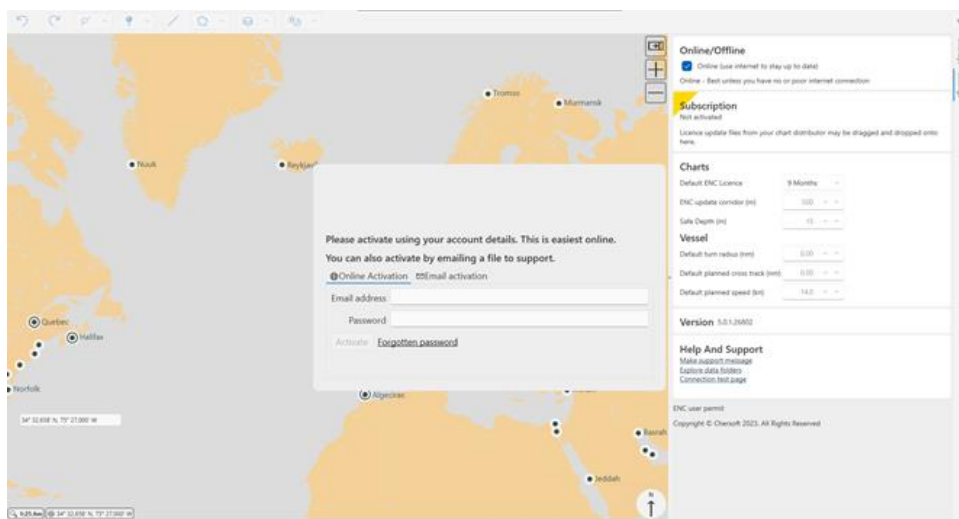




5. Activating WENDIS Viewer

5.1 Activating via Internet

1. If WENDIS Viewer is not yet activated, you'll be prompted to sign-in after opening the application.
2. Activating WENDIS Viewer online is usually easier. Input your email address and password and click activate. If you do not have this information. Please reach out to us at operations@weilbach.com.



Please activate using your account details. This is easiest online.
You can also activate by emailing a file to support.

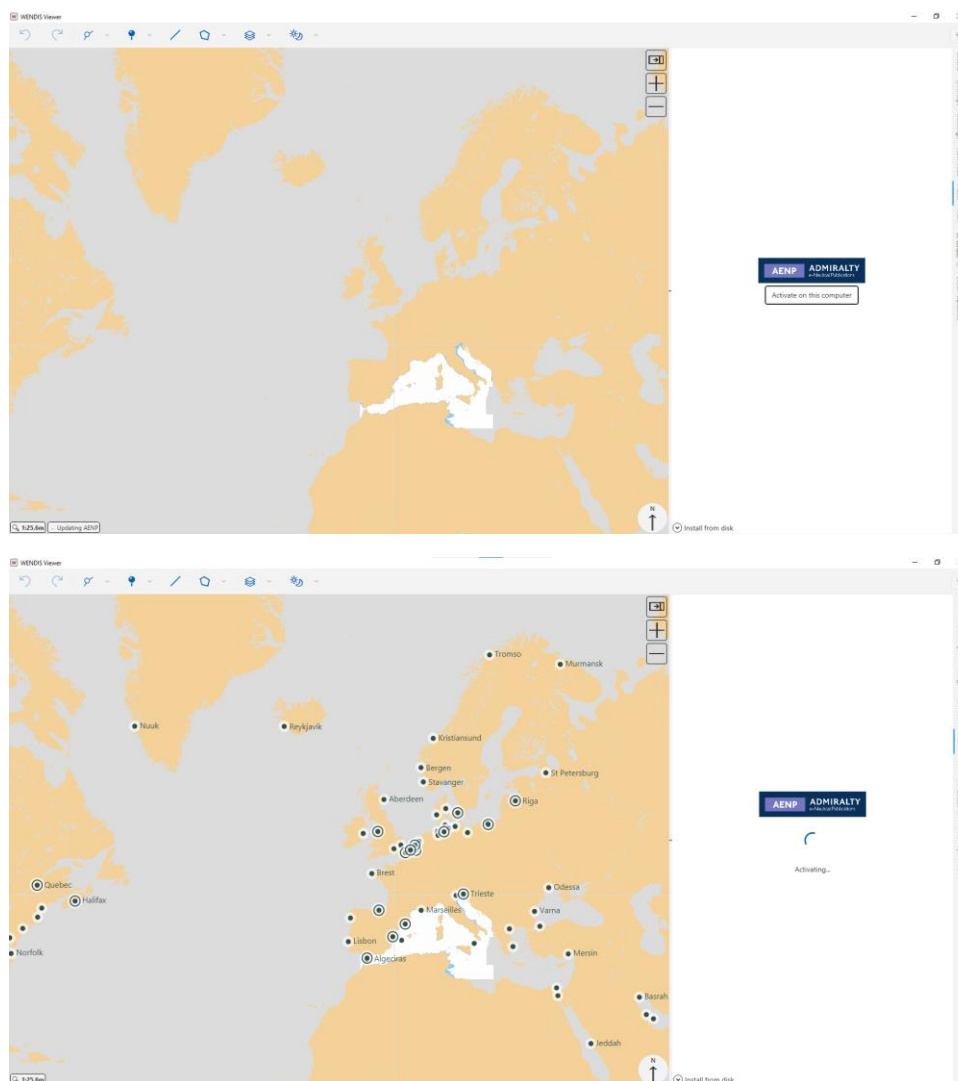
[Online Activation](#) [Email activation](#)

Email address

Password

[Forgotten password](#)

3. After successfully activating WENDIS Viewer, you may also want to activate AENP, if your vessel uses this feature. To do so open the AENP pane. Click the activate button. It shouldn't take more than a few minutes to activate AENP.



5.2 Activating via Email

1. To activate via email, you need your WENDIS Viewer startup key, which will be provided to you by your distributor and click *Save Activation Request*.



2. Click on the link to open the file location for the activationrequest.aar file.
3. Attach the file to an email and send it to operations@weilbach.com.
4. Once we have received your activation, we will create an activation key file, which we will send to you via email. The format of the key is [Computername]_ActivationKey.aak
5. Once you receive the file, open WENDIS Viewer and drag-and-drop the activation. WENDIS Viewer should activate within a few moments.



6. Setting up your vessel

Once WENDIS Viewer has been activated. You may want to start out by looking at the vessel settings, and configure them in accordance with the vessel needs.

6.1 Online/Offline

The online/offline setting determines whether or not the Viewer will update via the internet, or if update is completed via email. The default setting is Online.

6.2 Subscription

This area shows which services are available in WENDIS Viewer for the vessel, as well as the subscription end date.

6.3 Charts

6.3.A Default ENC License

This determines the default duration of charts in your order. Please adjust the value according to your vessel needs.

6.3.B ENC update corridor

This determines the width of the corridor when WENDIS Viewer suggest charts, a larger corridor leads to more suggestive charts, when using the *Available to order* from the route pane.

6.3.C Safe Depth

Please set this value according to the ship's characteristics.

6.4 Vessel

These settings influence the route time duration estimation, as well giving possible turn radius warnings on routes. Please set the values according to the vessel characteristics.

6.5 Route

If you are using WENDIS Viewer to create passage plans, you can either use the WENDIS Viewer default template, or create your own template file. For more information on how to create your own template, please see the link below:

<https://wbadeptstorage.blob.core.windows.net/docs/Route-Plan-Template-Editor.html#standard-template>

6.6 Auto-Route Settings

The Auto-Route setting determines which passageways are included or excluded when creating an Auto-route. If the Auto-Route provides an unexpected route, please check that the appropriate passageways for your vessel are open/closed.



The Anti-Piracy Routing may be either left checked or unchecked.

Please always manually check your voyage after generating an auto-route.

6.7 NMEA Settings

Allows for continuous position updates via. Onboard GPS or AIS equipment in WENDIS Viewer.

For more information on updates via GPS, please go to the below link:

<https://downloads.weilbach.com/Operations/WENDIS%20Viewer/>

To see the latest available guide and downloads for NMEA Service. Kindly note that the guide is intended for use by technical staff such as the company IT-department.

6.8 Version

Shows the current version of WENDIS Viewer installed on your system.

6.9 Help and Support

Allows you to create supports .ZIP files and test WENDIS Viewer internet connection. Please see the support section for specifics.



7. Charts

In some case it may be beneficial to pre-install the charts from both base DVDs, as less data would be required for future downloads. In the example below, base DVD2 is mounted on the f-drive, please note that based on your setup, this folder/drive might be different. Depending on your computer configuration, it may take a while to install the charts. It is recommended that you do not interrupt the chart installation, once it has begun.

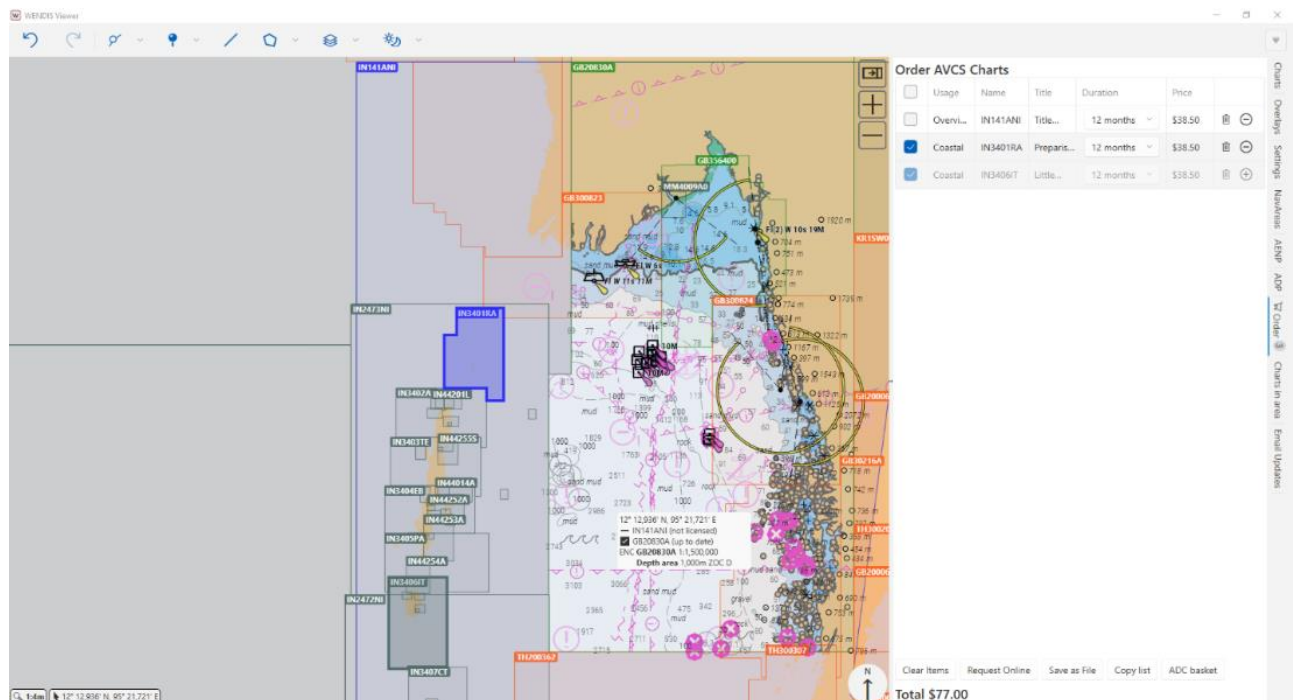
[illegible]



7.2 Appearance

Charts may appear in with different colors and outlines, please see below for list of colors and their significance. Please refer to the screenshot below for examples.

- Grey: The chart is unlicensed. Example: IN2473NI.
- Grey with highlight: The chart is a part of your current basket, but is not included in the order, and has been selected. Example: IN3406IT.
- Blue: The chart is part of your current basket and is included in order. Example: IN141ANI.
- Blue with highlight: The chart is part of your current basket and included in the order, and has been selected. Example: IN3401RA.
- Orange: Licensed, but not up-to-date. Example: GB300823.
- Green: Licensed and up-to-date. Example: GB356400.



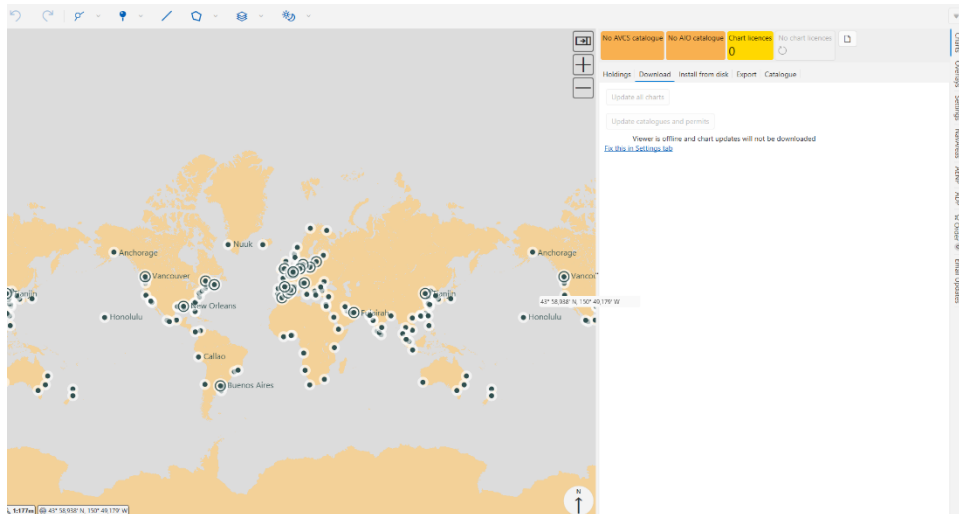
7.3 Updating charts via internet

By default WENDIS Viewer is set to update via the internet. If updating via the internet has been disabled, you will receive an alert on the *Charts* pane, and a link to *fix* it in Settings.

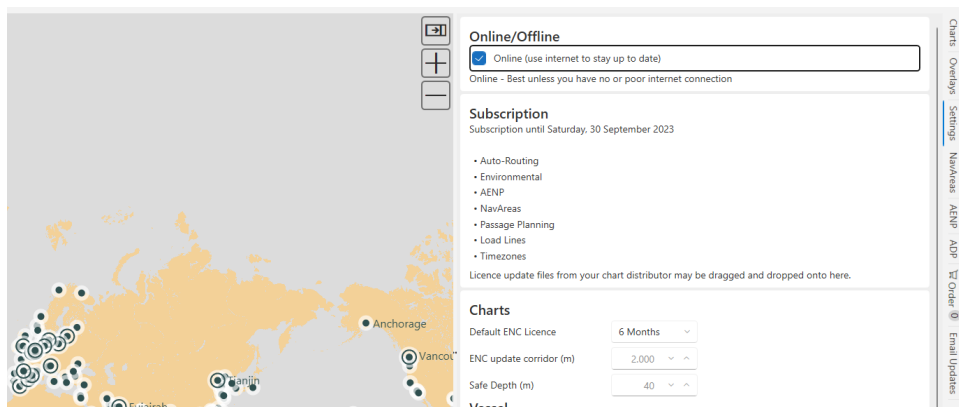


Weilbach®

NAUTICAL INSTRUMENTS DATA
CHARTS & BOOKS



Once the *Online* checkbox is checked, you are ready to download and update charts via the internet.



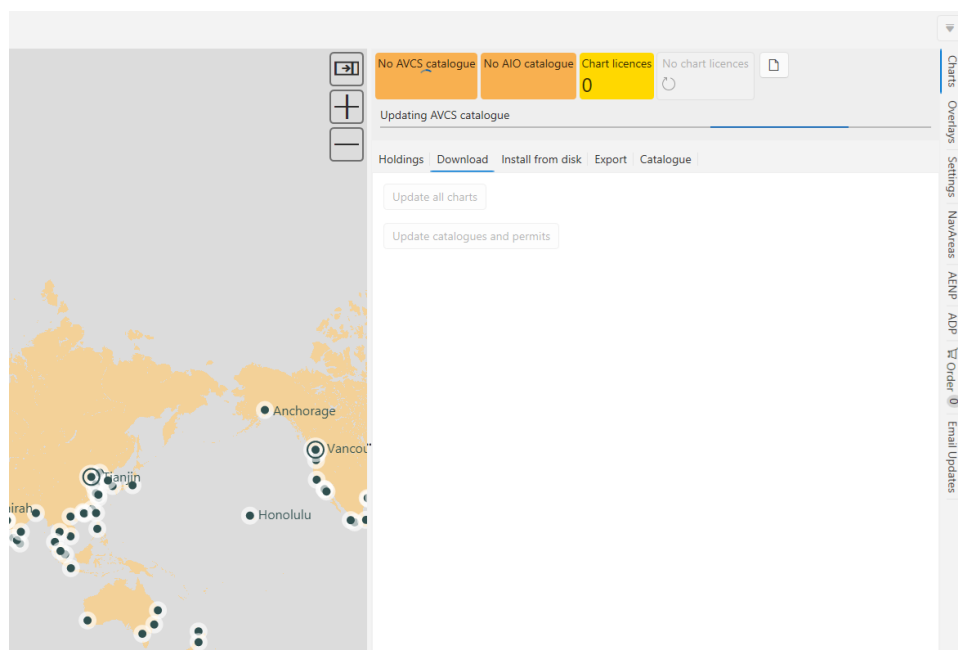
It is recommended that you start by clicking the *Update catalogues and permits*, to get the latest catalogues and permits first.

After Online has been checked in *Settings*, WENDIS Viewer will also check for new catalogue and permits every time you open the application.

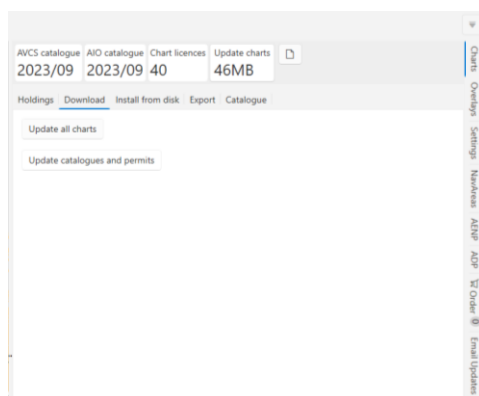


Weilbach®

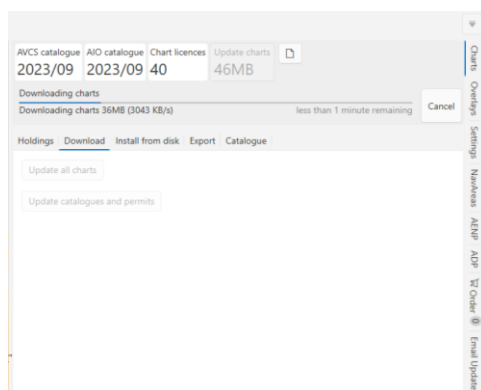
NAUTICAL INSTRUMENTS DATA
CHARTS & BOOKS



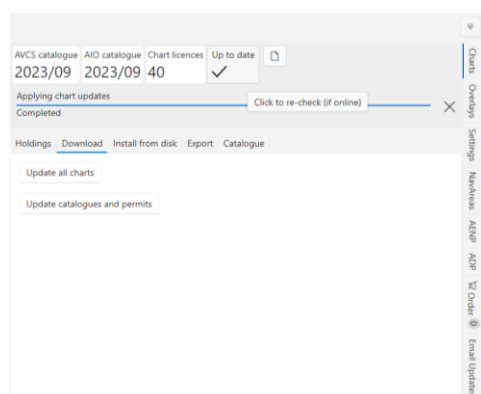
Once the update is complete, you'll notice the change of color in the *AVCS Catalogue*, *AIO Catalogue* and the *Charts Licences* boxes. A white background signifies that they are up-to-date. You may also notice that *Update Charts* will now show, the amount of data needed to do a complete update.



Once you click the *Update all charts* button, the download will initiate. The download time depends on your connection speed and chart download size.



Once the download has been completed, you'll notice that the text *Up to date* and a checkmark will appear in the box. Should you require one, you may also create an ENC holding report, by clicking the document icon.



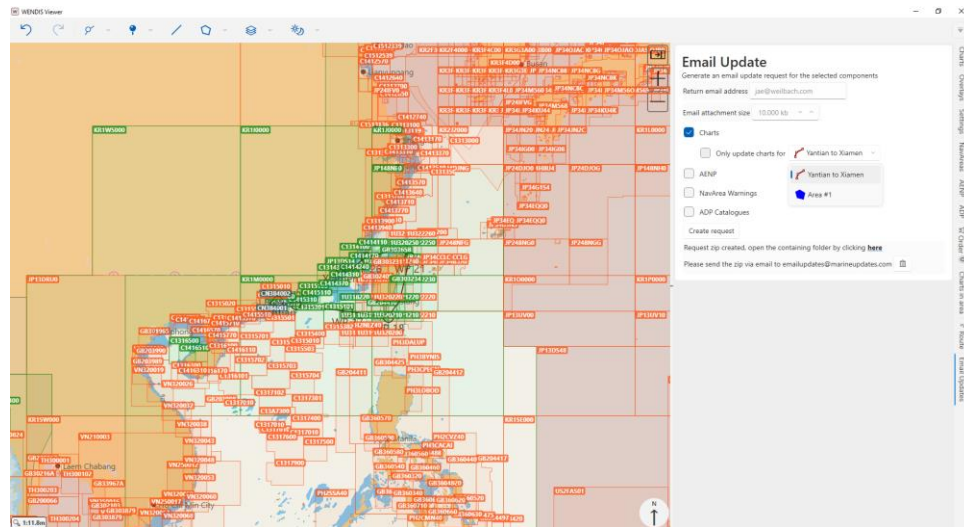
7.4 Updating charts via email

In WENDIS Viewer v5, email updates are created on-demand, when the vessel is ready to receive the updates. To create an email update request. Open the Email Updates sidebar. Enter the return email address. Check what you would like to update, and then click *Create request*. As seen on the screenshot below, you can either choose to request an update for all your charts, or can select to only request updates for a specific route or area.



Weilbach®

NAUTICAL INSTRUMENTS DATA
CHARTS & BOOKS



Before creating the actual request, please remember to check that the return email address and email attachment size has been set correctly.

Once you click the *Create request* button, the default mail application and an Explorer window will open automatically with a zip-file called *EmailRequest.zip*. If the computer you are on does not have an active email, you may transfer the file to another computer via USB. Then simply attach the file to an email and send it to emailupdates@marineupdates.com.

After sending the email *EmailRequest.zip* you should receive a response within the next few minutes. Please note that sender email and the return email address, do not have to be the same email address.

The zip-file you receive back as a reply, can be drag-and-dropped into the Viewer, and it will start the updating process.

In case the update size, exceeds the email attachment size set, you will receive one .zip file, and one or more .zXX file(s). Simply download all the files to same folder, the drag-and-drop the .zip file into the Viewer. The Viewer will auto-detect the other .zXX files and import them as well.

Please see chapter 14. Email Updates for additional information and examples.



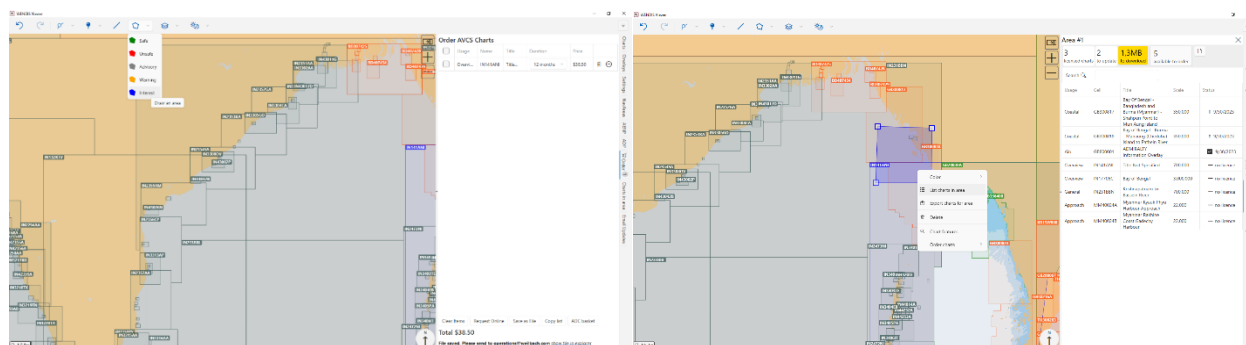
7.5 WENDIS Update for PAYS

If using PAYS, please see the PAYS user guide as to avoid excessive downloads.

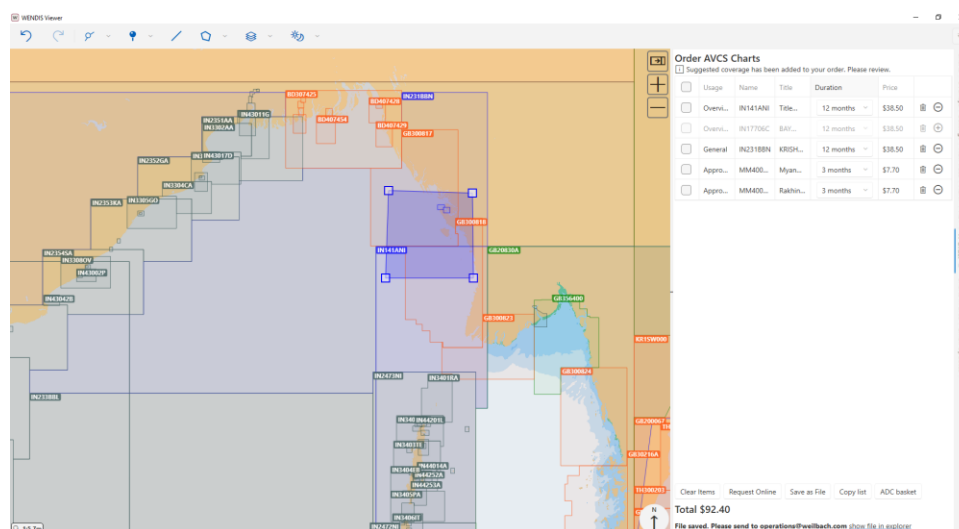
7.6 Creating an order

There are 3 different ways of creating orders for charts in WENDIS Viewer. The simplest way to order a single/few charts is to right-click it on the chart, then selecting *Order charts* and then select either a specific chart or adding all charts that cover that point to the basket.

The 2nd method is to create an order basket, is to create an area first, then right-click and select *List charts in area*. This brings up the details for the charts in that area. In this example, you may notice that some charts are already licensed, but not up-to-date. To go to the order basket, click *5 available to order*.



After you click the button, you will be brought to the order pane. From here you can request or edit your order.

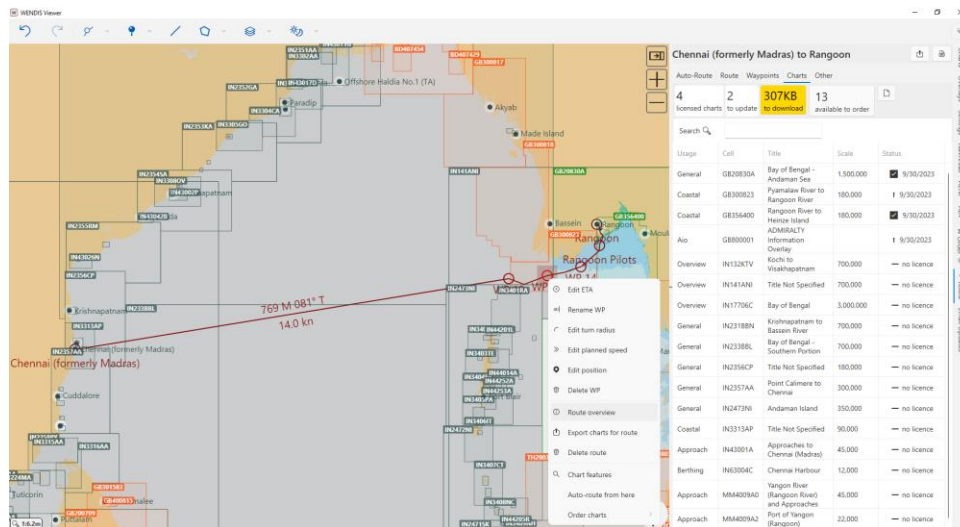




Weilbach®

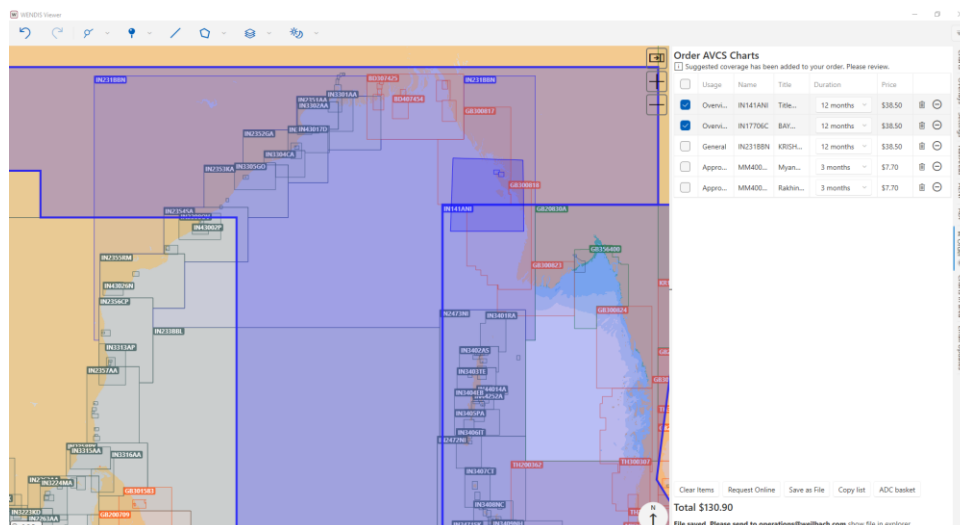
NAUTICAL INSTRUMENTS DATA
CHARTS & BOOKS

The 3rd way of creating a basket is to use *Route overview*. You can do this by right-clicking the route either directly on the chart or in the *Overlays* pane, and selecting *Route Overview*, then select *Charts* at the top of the *Route* pane.



7.7 Editing orders

To edit an order, please start by selecting the charts that you are interested in removing. In this example the two *Overview* charts IN141ANI & IN17706C have been selected.

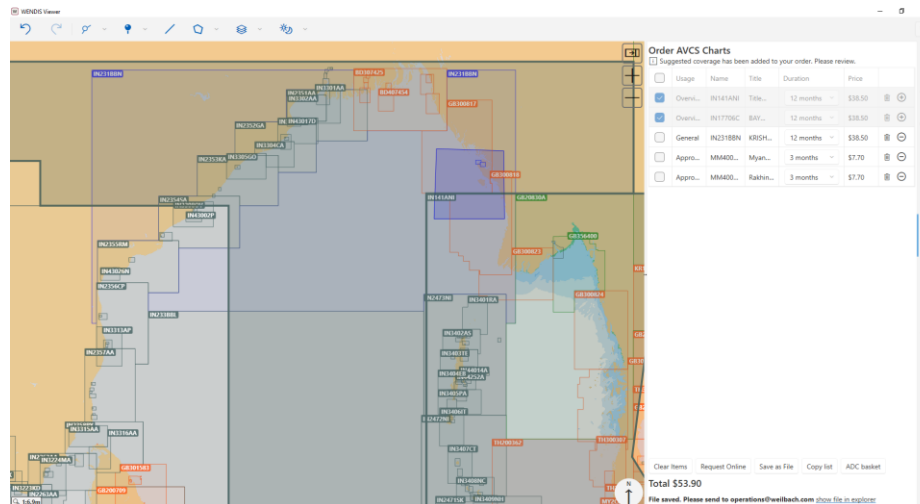




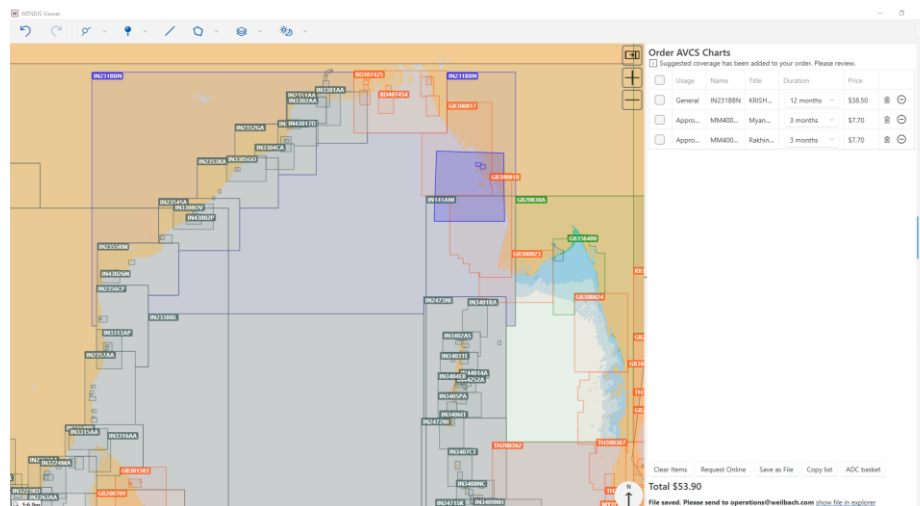
Weilbach®

NAUTICAL INSTRUMENTS DATA
CHARTS & BOOKS

After clicking the '-' button, the two charts have been dimmed and are now shown in grey color, on the chart, this indicates that they are no longer as part of the order. You may also have noticed the decrease in price, after removing the two charts from the order.



If you want to remove them entirely from the basket, select the *Trashcan* icon.



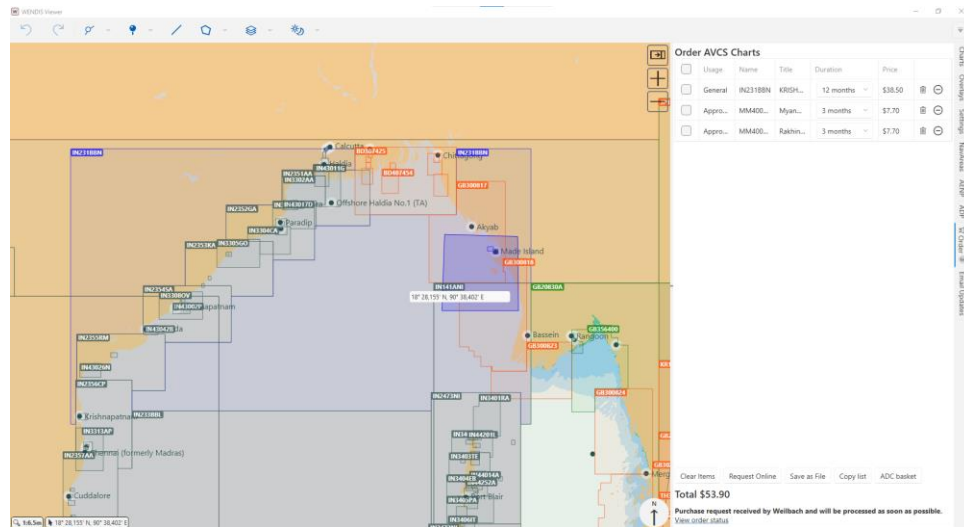
7.8 Placing an order via internet

Once you are satisfied with the content of the order. Select *Request Online* to send your order to Weilbach.

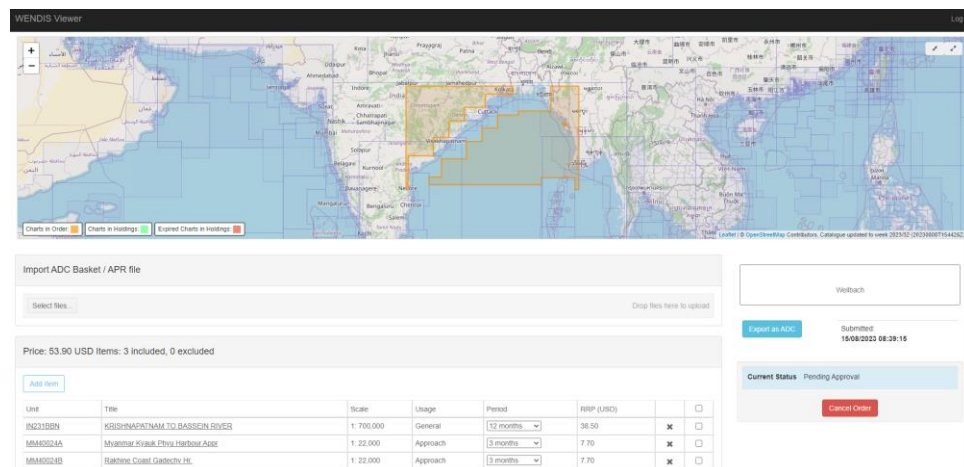


Weilbach®

NAUTICAL INSTRUMENTS DATA
CHARTS & BOOKS



Depending on the setup, you may be able to *View order status*. Clicking this link will open a webpage, showing the current status of the order. If the order has not yet been approved, the vessel will have the option to cancel an order. Click *Cancel Order* to cancel an order.



After cancelling an order, the status of the order will change from *Pending Approval* to *Cancelled*.



Weilbach®

NAUTICAL INSTRUMENTS DATA
CHARTS & BOOKS

WENDIS Viewer

Price: 53.90 USD Items: 3 included, 0 excluded

Item	Title	Scale	Usage	Period	RSP (USD)
IN218BN	KRISHNAPATNAM TO BASSIN RIVER	1:700,000	General	12 months	38.50
MM400LA	Myanmar Andam Port Harbour Area	1:22,000	Approach	3 months	7.70
MM400LB	Bahrein Coast Gachsbyr	1:22,000	Approach	3 months	7.70

Current Status: Cancelled

If the order has been approved, the current status will show *Success* in a green box. At that point, we suggest that you go to *Charts > Download*, and click *Update catalogues and permits* to receive your new permits.

7.9 Placing an order via email

Once you are satisfied with the content of the order. Select *Save as file* to create a Purchase request file.

WENDIS Viewer

Order AVCS Charts

Usage	Name	Title	Duration	Price
General	IN218BN	KRISHN...	12 months	\$38.50
Appro...	MM400L...	Myan...	3 months	\$7.70
Appro...	MM400L...	Rakho...	3 months	\$7.70

Total \$53.90

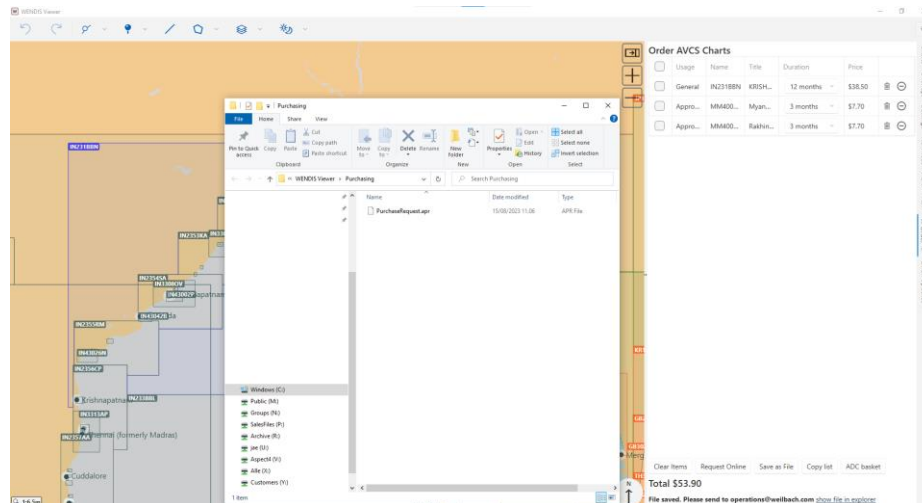
File saved. Please send to operations@weilbach.com [show file in explorer](#)

Click *show file in explorer* to open an *Explorer* window containing the file. You can either drag the copy the file to USB or attach the file to an email, if the computer has email capabilities.



Weilbach®

NAUTICAL INSTRUMENTS DATA
CHARTS & BOOKS



Please note that clicking the *Save as file* button will overwrite a previous purchase request file.

Once your chart has issued the permits, WENDIS Viewer is ready to be updated either via internet or via email.

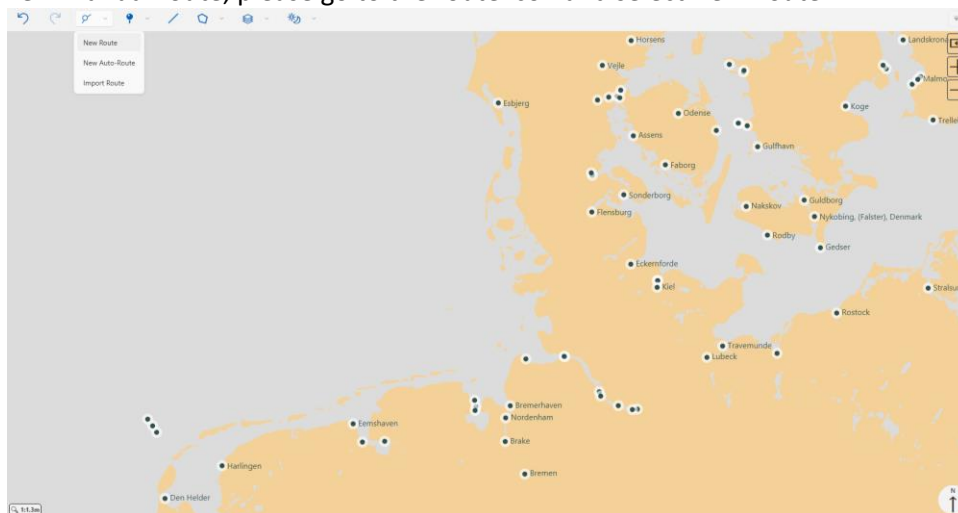
It is recommended that you open the *Order* pane and click *Clear items*, after receiving the permits.



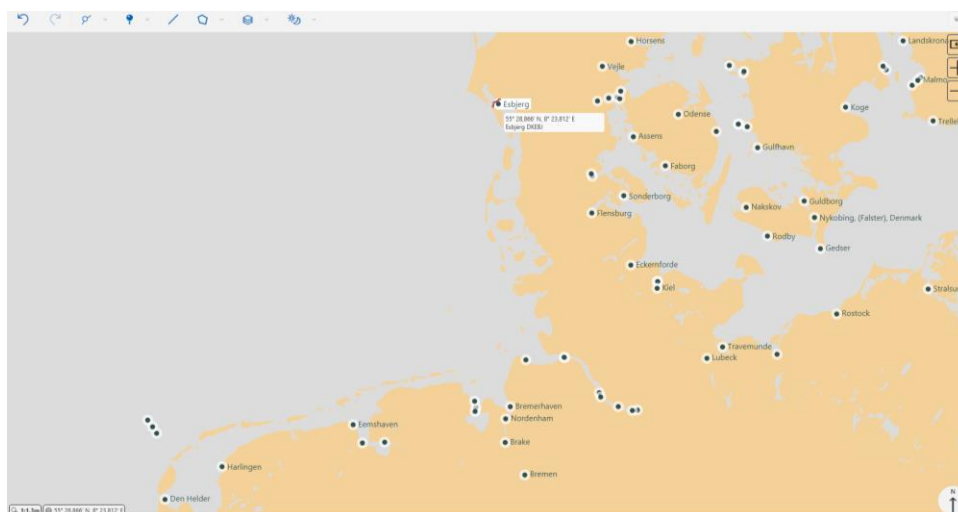
8. Routes & Areas

8.1 Manual Routes

To create a new manual route, please go to the route icon and select *New Route*.



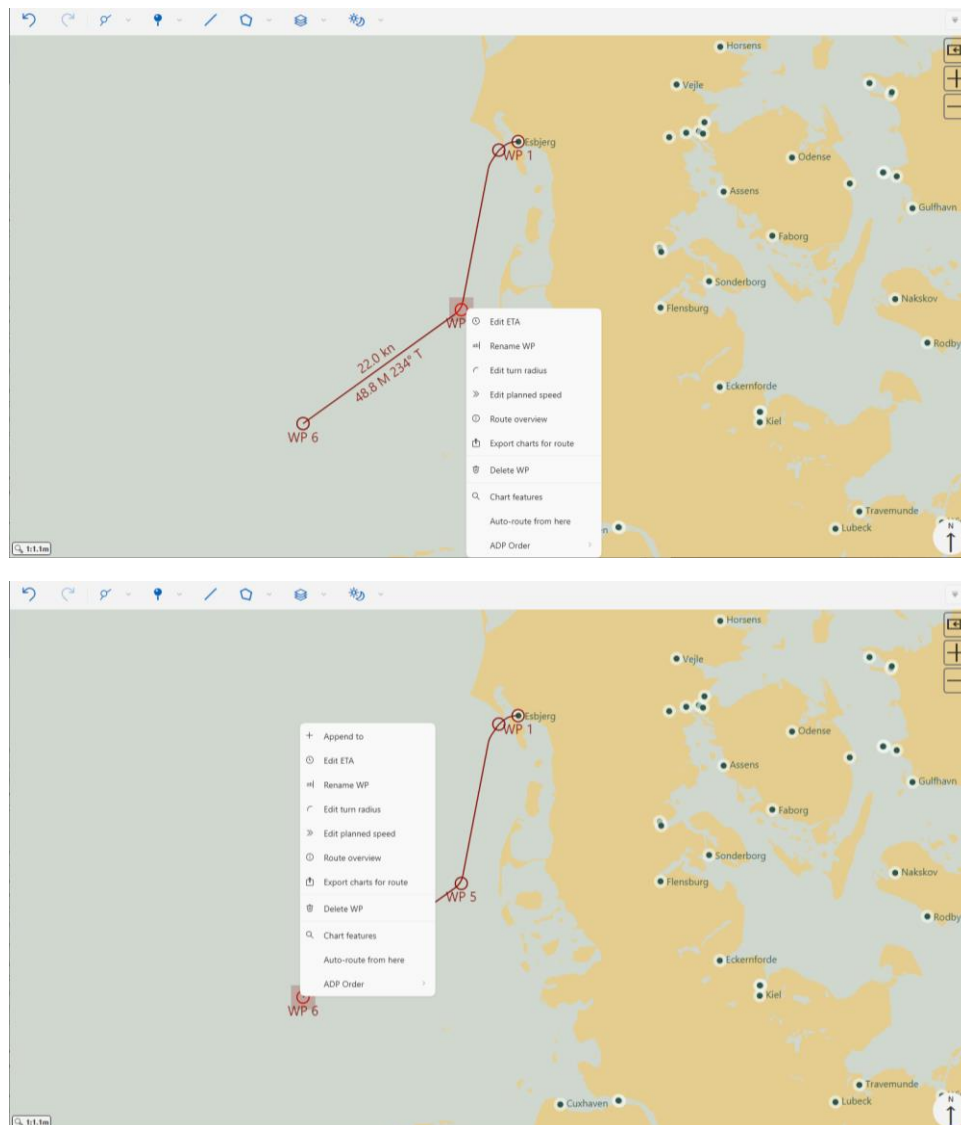
You'll notice that the cursor icon changes to *Route mode*.



Simply click a location on the chart to create the waypoints. You may zoom in/out by using the mouse scroll wheel. While in route mode and after creating the first waypoint, you will need to place the mouse cursor at the edge of the window to move around on the map. You can exit route mode by left-clicking. Once the waypoints for your route have been created, you can right-click it and menu of options will appear. You'll noticed the last waypoint on a route also includes the *Append to* option, should you wish



extend the route. You can drag the individual waypoints around the map by selecting them and holding down the left mouse button.

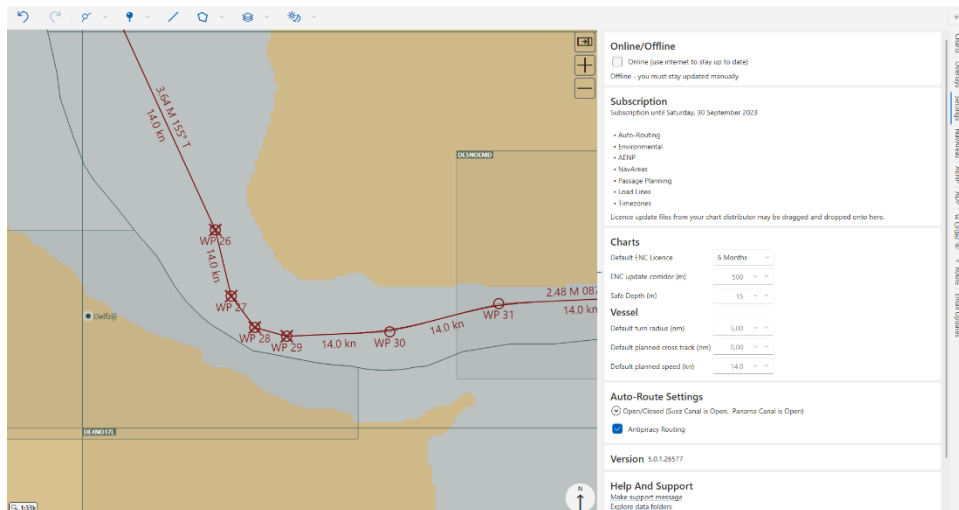


You may notice some 'Red crosses' on some of the waypoints, after creating your route. These icons are dependent of the vessel characteristics, specifically the default turn radius, which is located in *Settings*. In the below example, you could edit in the default turn radius in *Settings* or alternatively right-click the individual waypoint and select *Edit turn radius* to adjust. For a more accurate route timing schedule, you may either adjust the default planned speed in *Settings* or at the individual waypoint, by right-click the waypoint.



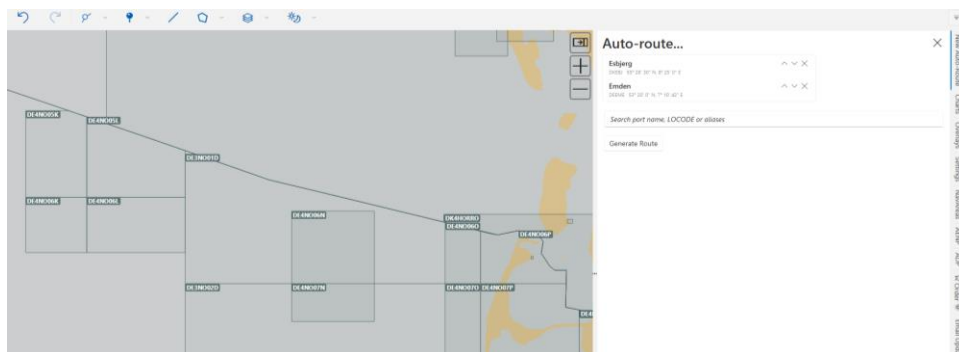
Weilbach®

NAUTICAL INSTRUMENTS DATA
CHARTS & BOOKS



8.2 Using Auto-route

Instead of creating manual routes you may also use the auto-route function. From the *Route* icon, select *New auto-route*. A sidebar will appear, then simply enter the ports on your route and select generate.



After generating the route, you may be presented with the warning below. Please remember to review your route.

This route was originally automatically generated from AtoBviaC Ltd (but may since have been altered). Information dated 03/03/2022. It must be reviewed or modified by a qualified person before being used for navigation.

The route may show ECA zones as well as the expected voyage duration.



Esbjerg to Emden

Auto-Route **Route** Waypoints Charts Other

183 M (9 hours 7 minutes)

⬆ ECA zones 183 M

North Sea area 183 M

In the *Waypoints* pane, information about individual waypoints can be found.

Esbjerg to Emden

Auto-Route Route **Waypoints** Charts Other

☒ Move chart with selection

Zone Filter

Inside Load Line: North Atlantic Winter Seasonal Zone II
Inside Time Zone: UTC+01:00
Inside Environmental: North Sea area
Inside Environmental: North West European waters
Inside Territorial Waters: Danish 12 NM
Inside AENP Publication: e-NP55 North Sea (East) Pilot
Inside AENP Chapter: The Elbe to Horns Rev

16/02/2023 00:00

Esbjerg

5.0 kn 160 m, 242° T

00:01

WP 2

5.0 kn 0.75 M, 307° T

00:10

WP 3

5.0 kn 0.70 M, 287° T

00:18

WP 4

5.0 kn 0.41 M, 255° T

00:23

WP 5

5.0 kn 2.84 M, 229° T

00:57

WP 6

20.0 kn 0.81 M, 247° T

The next pane is the *Charts* pane. This window should give you an overview of the charts needed for the route. Please note that the number of available charts to order, is dependent on the ENC update corridor. Remember to set a corridor size that suits vessel needs in *Settings*.

Weilbach A/S
Firskovvej 36
DK-2800 Kgs. Lyngby
Denmark

www.weilbach.com
CVR No: 54 95 38 28

Phone: +45 33 34 35 60
operations@weilbach.com

Page 33 of 67



Esbjerg to Emden

Auto-Route | Route | Waypoints | **Charts** | Other

1 licensed charts | ☒ up to date | 25 available to order

Full Text Search

Usage	Cell	Title	Scale	Status
Overview	DE1NO000	North Sea - German part	1,500,000	— no licence
Overview	DK1NORSO	North Sea - Skagerrak	1,500,000	— no licence
Overview	NL1NZ100	North Sea	1,500,000	— no licence

Clicking the *Available to order* button, brings you to the *Order* menu. From here you can add/remove charts from your basket and your order. Please remember to check you order, before requesting.

Order AVCS Charts

☐ Suggested coverage has been added to your order. Please review.

<input type="checkbox"/>	Usage	Name	Title	Duration	Price		
<input type="checkbox"/>	Overview	DE1NO000	North Sea - German part	3 months	6.60 USD	<input type="checkbox"/>	<input type="checkbox"/>
<input checked="" type="checkbox"/>	General	DE2NO000	German Bight	3 months	6.60 USD	<input type="checkbox"/>	<input type="checkbox"/>
<input checked="" type="checkbox"/>	Coastal	DE3NO01D	Waters OWP Butendiek to Sylt	3 months	6.60 USD	<input type="checkbox"/>	<input type="checkbox"/>
<input checked="" type="checkbox"/>	Coastal	DE3NO02C	Waters West of Helgoland	3 months	6.60 USD	<input type="checkbox"/>	<input type="checkbox"/>
<input type="checkbox"/>	Coastal	DE3NO02D	Nordfriesische and Helgolaender	3 months	6.60 USD	<input type="checkbox"/>	<input type="checkbox"/>
<input type="checkbox"/>	Coastal	DE3NO03C	Borkumriff to Norderney Emden	3 months	6.60 USD	<input type="checkbox"/>	<input type="checkbox"/>

1. 'Select all'. Checked charts will have a blue outline, if viewing the AVCS catalogue layer.
2. Dimmed item. This chart not a part of the order, but it is in your basket and should be reviewed & added, in case it is needed for a voyage.
3. Remove chart from basket entirely.
4. Add a dimmed chart from your basket to your order.
5. Remove a chart from your order. The chart will still remain in the basket.



If you don't need any of the chart, click *Clear items*. Otherwise, and once you have reviewed the charts, you can either request online or save as file. The file can be transmitted to your distributor via email.

For more information on charts please see the “charts” subsection of the guide.

If you click on the “ADP” subpane, then you are able to see which ADPs are required for the route in the menu.

You will need to click on the “+” to add the publications to your basket.

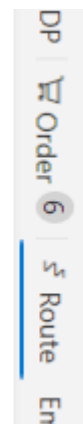
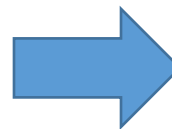
Esbjerg to Emden

Auto-Route | Route | Waypoints | Charts | **ADP** | AENP

Search

Product	Area Name		Updated to
ADLL	ADLL Area 1&2	—	2022/45
ADRS	ADRS6 Area 3	+	2022/45
ATT	TotalTide Area 1 to 4	+	2022/45



Once you have added the necessary charts and publications to your order, then please click on the “Order” menu in the side pane to finalize the order for distributor approval.





In the *AENP* subpane, e-NPs for the route is shown. Clicking the '+' sign adds them your basket. If you expect that you will need an e-NP in the nearby future, it may be an advantage to pre-download it, while having a stable internet connection to avoid large downloads in the future.


Esbjerg to Emden



Auto-Route | Route | Waypoints | Charts | ADP | AENP


Admiralty e-NPs for route

☐ Show only licensed publications

Search 

Number	Publication	Licence	Installed
e-NP55	North Sea (East) Pilot	<div><div>+</div><div>44.50 GBP - 12 Months</div></div>	<div><div>↓</div><div>9,8MB</div></div>
e-NP100	The Mariner's Handbook	<div><div>+</div><div>44.50 GBP - 12 Months</div></div>	<div><div>↓</div><div>19,3MB</div></div>
e-NP231	ADMIRALTY Guide to the Practical Use of	<div><div>+</div><div>59.20 GBP - 12 Months</div></div>	<div><div>↓</div><div>8,4MB</div></div>

Once the item has been added to basket, the icon changes to a shopping cart icon as shown below, which can be clicked to take you to the full order menu.

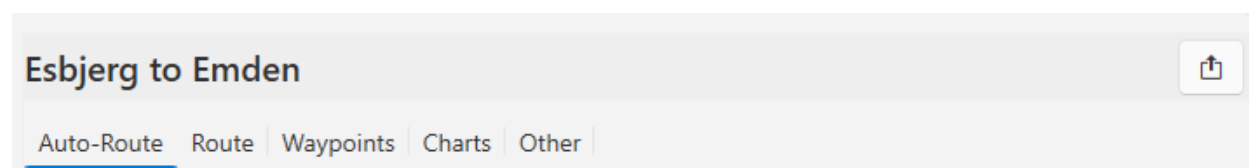
Number	Publication	Licence	Installed
e-NP55	North Sea (East) Pilot	<div><div>—</div><div></div></div>	<div><div>↓</div><div>9,8MB</div></div>



8.3 Importing and exporting routes

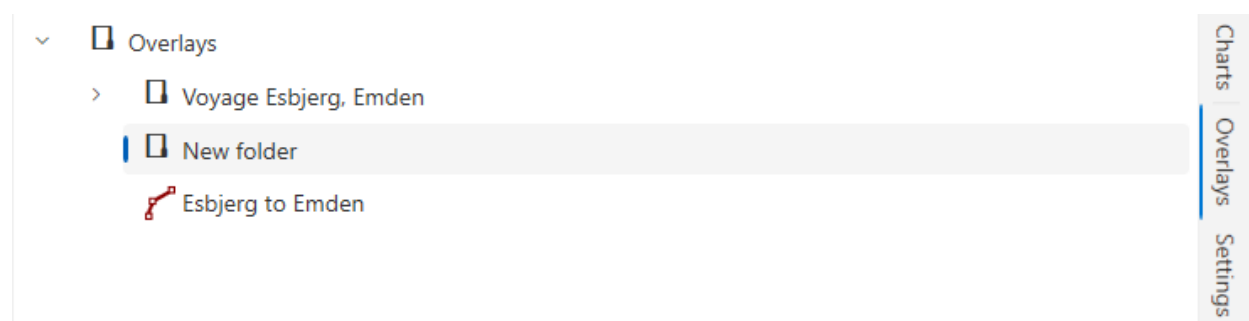
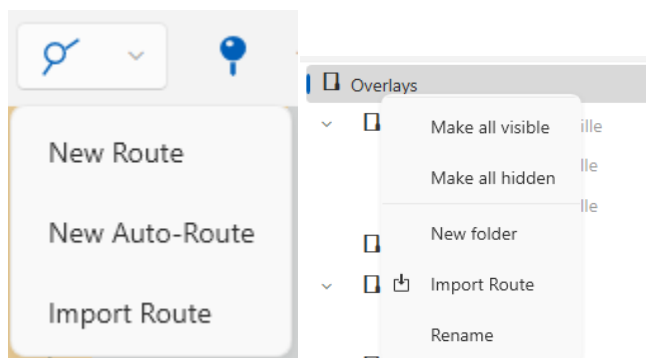
8.3.A Exporting routes

To export a route created in WENDIS Viewer, click the *Share* button. An *Explorer* window will appear, please select the appropriate place to save your route. The default format when saving routes is .rtz, but more options are available, should they be required.



8.3.B Importing routes

To import a route, click the *Route* icon, then select *Import route*. The *Overlays* window from the sidebar will automatically open. You may notice that unlike an auto-route, imported routes are not placed in a folder automatically. Should you need folders to keep track of your route, please right-click the *Overlays* folder and select *New folder*, then drag your route inside the folder.





8.4 Route Optimization

Initial setup

In order to achieve the most accurate results from the route optimization engine, it needs to know certain information about the vessel. Some of this is required and some is optional. Where possible more information about a value is provided via a tooltip that is available by hovering over the property name

Route Optimisation

Vessel depth (m)	0.00	▼	▲
Vessel draft (m)	15.00	▼	▲
UKC (m)	15.00	▼	▲
Block coefficient	0.69	▼	▲
Midship coefficient	0.98	▼	▲
Waterplane coefficient	0.75	▼	▲
Deadweight (mt)	1.00	▼	▲
Wet area (m ²)	0.00	▼	▲
Volumetric displacement (m ³)	0.00	▼	▲

⌵ Advanced Settings

Some of this information can be changed on a route by route basis but there is section of UI in the settings pane where values can be maintained at a high level. These can then be used as default values and will be copied to a route when its created



Requirements for optimization

In order to submit a route to be optimized the application must be online (Settings -> Online)

Online/Offline

☒ Online (use internet to stay up to date)

Online - Best unless you have no or poor internet connection

The ETA or ETD of route must also be set. This can be done by right clicking on the start or end waypoint of a route and selecting Set ETA / Set ETD

The optimization button will be disabled if these parameters are not met

Creating an optimization request

The optimization request is created in the route overview tab.

Here you will find the voyage settings, some of which will be pre-populated with the values from the settings pane.

Tool tips are available to explain the fields in more detail. One field of note though is the Lock optimization to base route

The optimization engine has the ability to deviate from the planned route in order to find more favorable sailing conditions. As a result, the optimized route will often follow a different path. There are instances though when this divergence is not suitable, such as in areas where traffic control is in effect, or when entering or leaving a port. In this instance it's important that the optimization strictly adheres to the base route.

In this scenario the optimization engine will experiment with changing the vessel speed in order to get the most optimal route. Areas where no deviation will take place can be fine tuned with the Optimization Restriction Areas, but if you want a quick way of ensuring the base route is followed leave this option enabled. If any Optimization Restriction Areas are defined this value will be ignored



Copenhagen to Chiba

⤴ Voyage Settings

24.00 v ^

14.50 v ^

15.50 v ^

13.50 v ^

15.50 v ^

13.50 v ^

10.00 v ^

15.00 v ^

☐

Ⓢ Optimisation Restriction Areas

Weilbach A/S
Firskovvej 36
DK-2800 Kgs. Lyngby
Denmark

www.weilbach.com
CVR No: 54 95 38 28

Phone: +45 33 34 35 60
operations@weilbach.com



Weilbach®

NAUTICAL INSTRUMENTS DATA
CHARTS & BOOKS

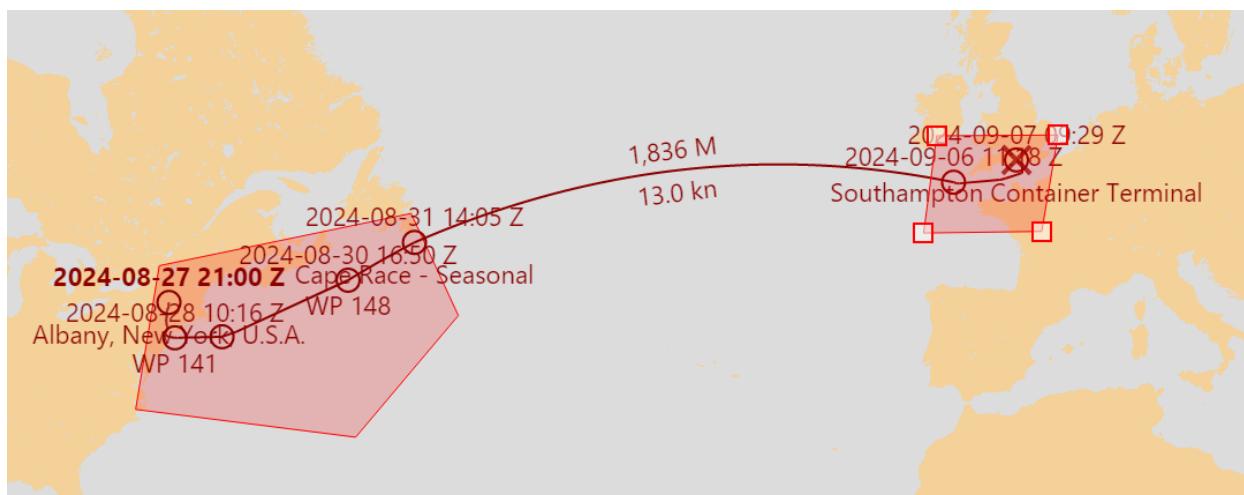
Optimization Restriction Areas

Areas can be created that denote where no deviation should take place within the route.

This are created using the normal area overlay (It does not matter what type of area is created).



In this example route from New York to Southampton areas have been created around the start and end of the route, leaving space for deviation to take place over the Atlantic Ocean.





These areas are then selected in the Optimized Restriction Areas UI.

Optimisation Restriction Areas

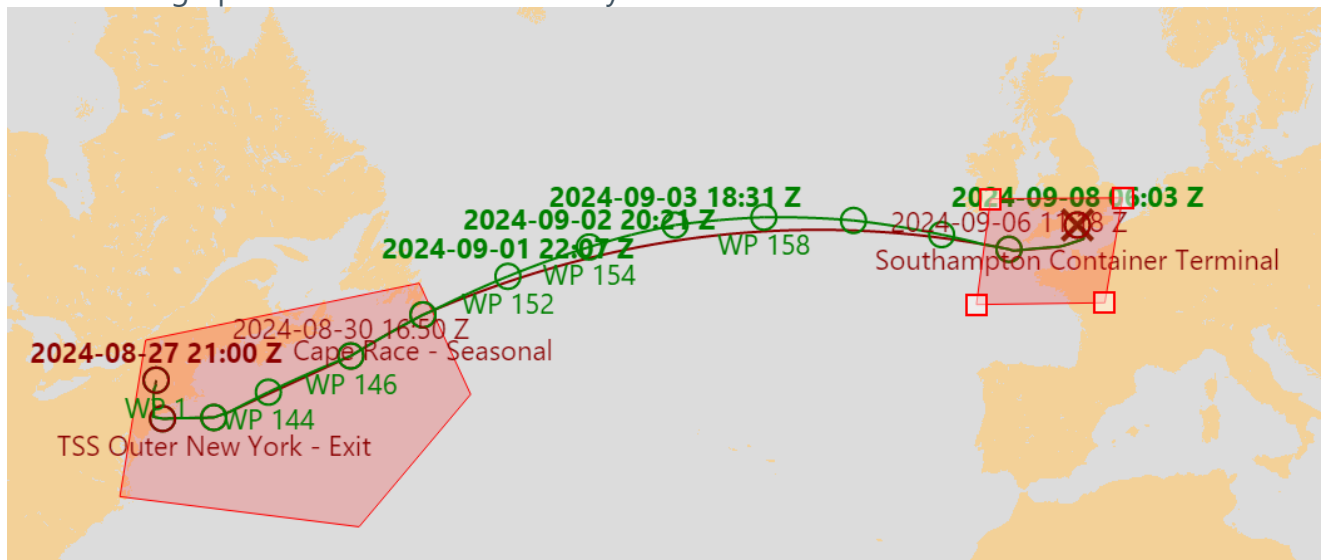
To restrict optimisation to the base route for certain legs, define an area on the map and add it here. Up to 10 areas can be added

Add

Area #1

Area #2

The resulting optimized route will then only deviate outside of these areas.



Submitting an optimization request

Once all of the settings have been reviewed click "Optimize Route" to submit the request.

This will then check if any vessel details have changed, along with any optimization restriction areas that need to be submitted. Finally, the base route will be reviewed and the optimization will begin.



The optimization progress will be shown and refreshes every 5 seconds. There is no need to stay on this tab while the optimization is calculated. The application can be used as normal and even closed. Upon going back to the optimization tab the most up to date status will be checked and displayed.



Loading Wind data (19%)

Cancel Optimisation

Downloading optimized result

Once the optimization has finished the option to download the optimized routes will become available

Optimisation complete!



Download optimised route

This will download 3 optimized routes

1. Best Fuel
2. Best Time
3. Best Time / Cost Equivalence (taking into account time/fuel saving vs cost of vessel)



Copenhagen to Chiba



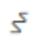
Auto-Route | Route | Waypoints | Charts | ADP | AENP | Optimisation

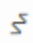
⌵ Voyage Settings

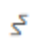
Routes

☒ Base route (11,988 M) (38 days 21 hours)

Time	Fuel Usage
ETD August 27 16:59	ECA 97 mt
ETA October 05 14:45	Non-ECA 1024 mt
	CO2 3498 mt

☐ Best Fuel (11,986 M) (42 days 2 hours) 

☐ Best Time (11,986 M) (36 days 4 hours) 

☐ Best Time/Cost Equivalence (11,986 M) (39 days 23 hours) 

Optimized route details

Clicking the check box next to each route will expand its details/savings and also display it on the map

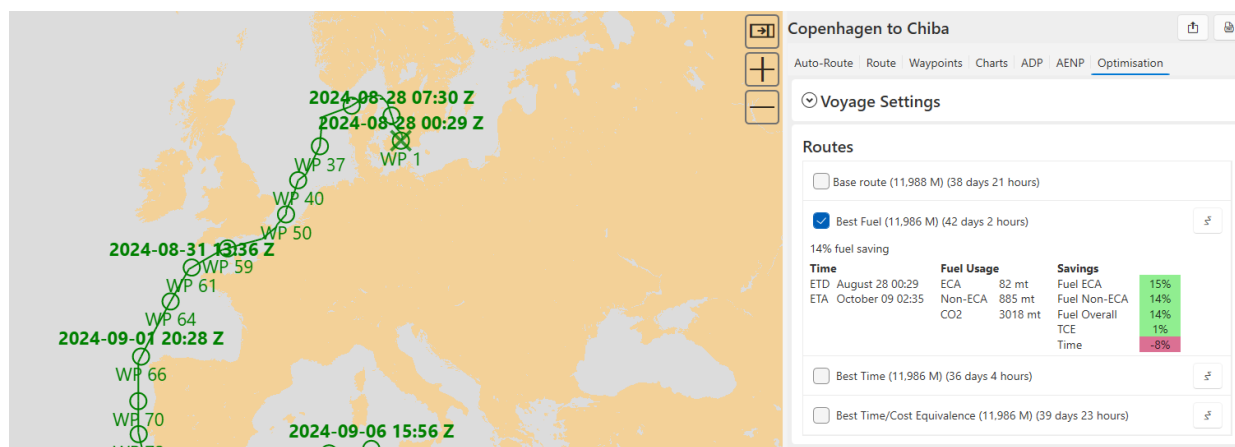
The base route can be also toggled on and off to make viewing the optimized route easier in areas where it follows the base route closely



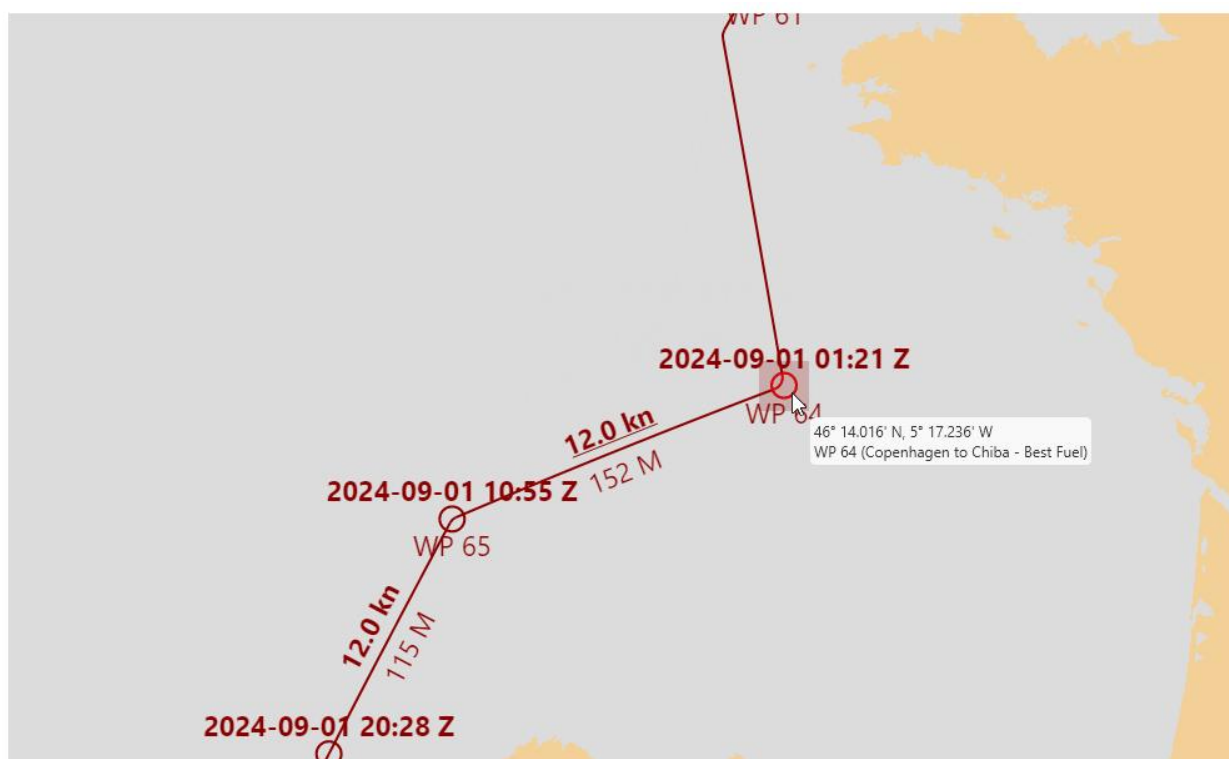
Weilbach®

NAUTICAL INSTRUMENTS DATA
CHARTS & BOOKS

Any optimized route is displayed on the map in green.



If a change is made to an optimized route (such as moving a waypoint) it will revert back to being displayed in red and will no longer be classed as optimized.

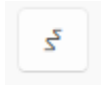




Weilbach®

NAUTICAL INSTRUMENTS DATA
CHARTS & BOOKS

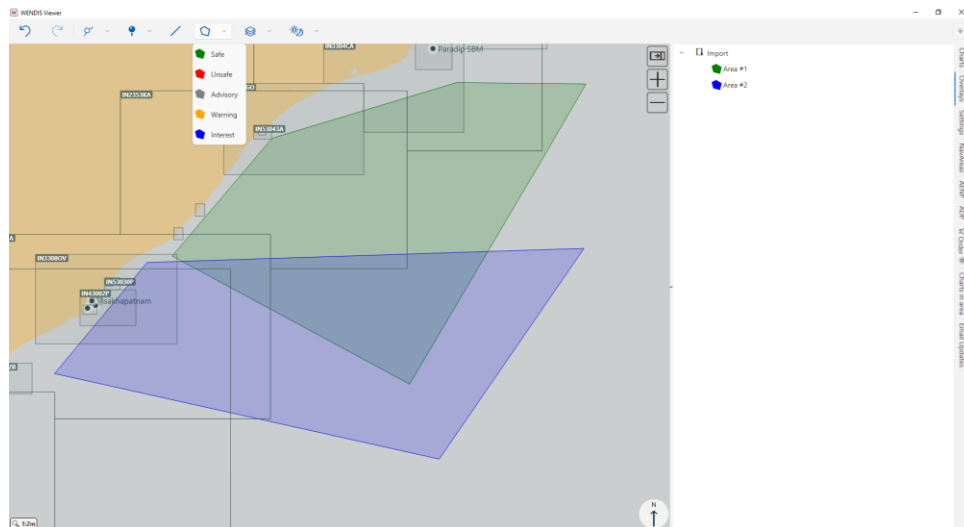
The route overview for the optimized route can be viewed using the button next to the title. It is the icon below:





8.4 Areas

To create an area, click the *Area* button in the top bar. Then select the type of area you want to create. Right-click to create a point, left-click to remove the latest point. Double-click to create the final point.



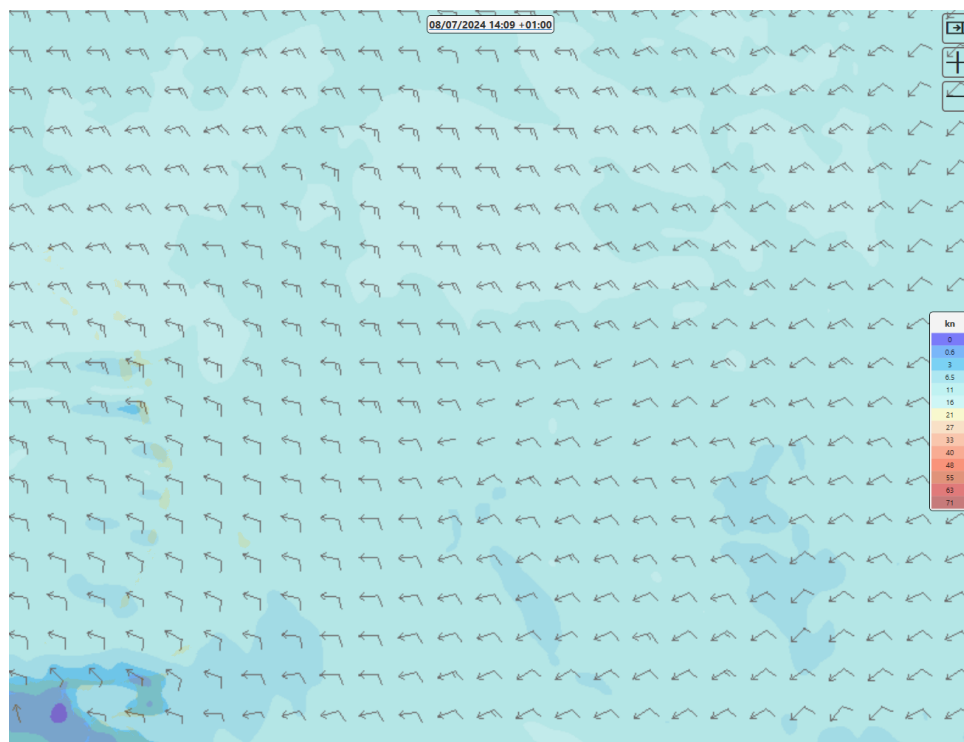


9. Weather

If licensed, a number of different weather types can be viewed within the application.

These currently consist of the following:

1. Wind - (Wind speed and direction at 10 m above the ground level).

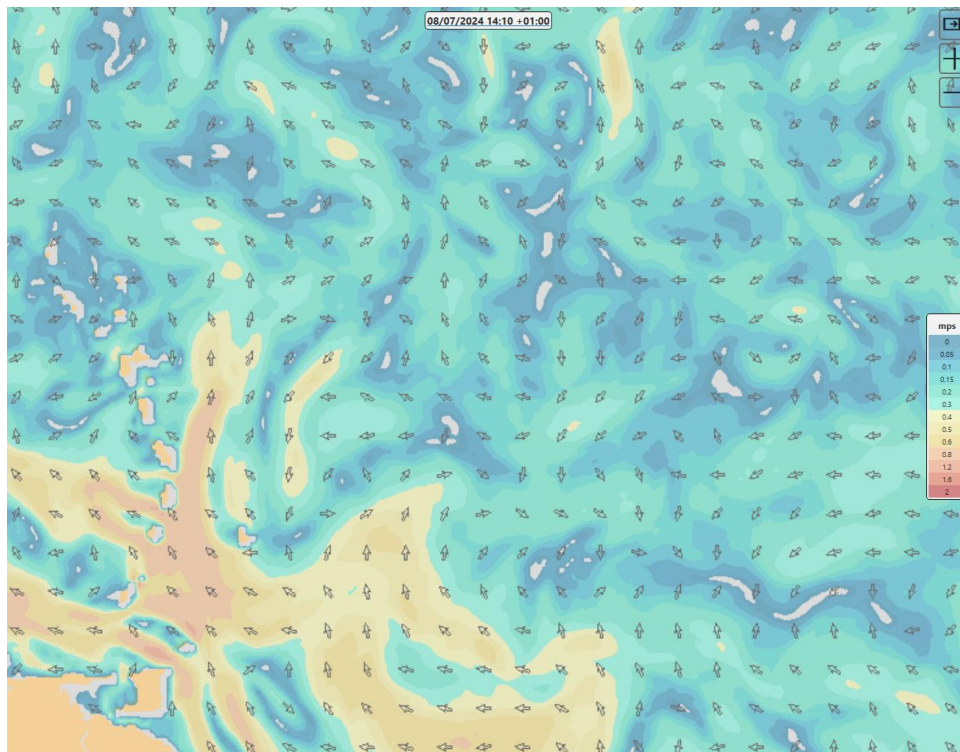




Weilbach®

NAUTICAL INSTRUMENTS DATA
CHARTS & BOOKS

2. Ocean Currents - (Ocean currents at 5 m depth level).

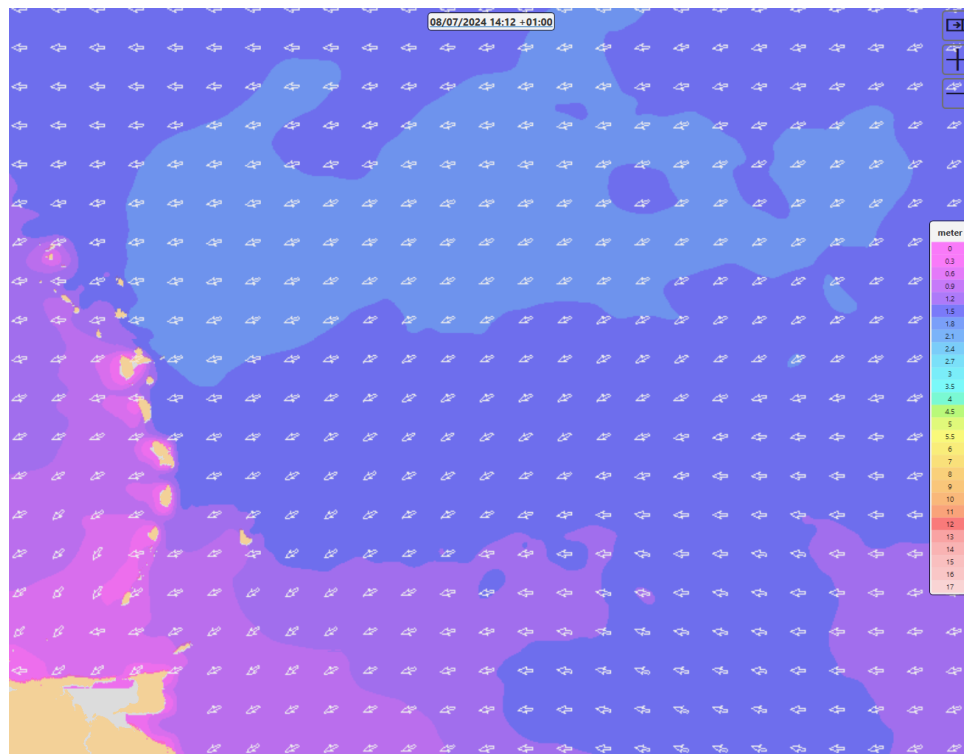




Weilbach®

NAUTICAL INSTRUMENTS DATA
CHARTS & BOOKS

3. Wave Height - (Mean wave height (trough to crest) of the highest third of the waves and the mean of all the individual wave directions in a time-series representing a certain sea state).

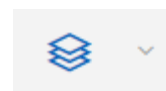
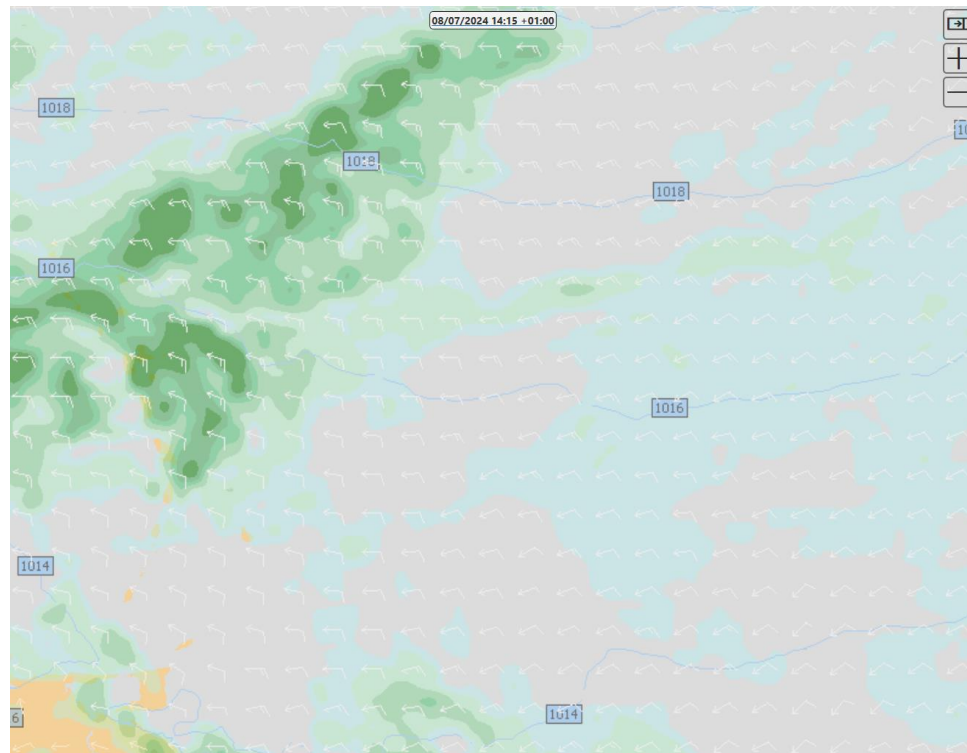




Weilbach®

NAUTICAL INSTRUMENTS DATA
CHARTS & BOOKS

4. Wind/Pressure/Precipitation Wind speed (kn) and direction (degrees) + Mean sea level pressure (hPa)
+ Accumulated precipitation (mm).



These layers can be turned on an off via the layer's menu.

Please note that an active internet connection is required to view these layers. If the application is in offline mode the layers will not be visible / enabled

Wind
Ocean Currents
Wave Height
Wind/Pressure/Precipitation



Changing time

To view the weather for a different date / time use the control at the top of the map. You can hover over it to access options to advanced / rewind time by an hour or a day.

-1d

-1h

08/07/2024 15:21 +01:00

+1h

+1d

Alternatively you can click on the underlined current time to manually select a value

08/07/2024 15:24

UTC+1

▼

Set

Clear

July - 2024

M

T

W

T

F

S

S

27

1

2

3

4

5

6

7

28

8

9

10

11

12

13

14

29

15

16

17

18

19

20

21

30

22

23

24

25

26

27

28

31

29

30

31

1

2

3

4

32

5

6

7

8

9

10

11

00:00

01:00

02:00

03:00

04:00

05:00

06:00

07:00

08:00

09:00

10:00

11:00

12:00

13:00

14:00

15:00

16:00

17:00

18:00

19:00

20:00

21:00

22:00

23:00

Close



Weilbach®

NAUTICAL INSTRUMENTS DATA
CHARTS & BOOKS

Changing opacity

By default the weather layers are set to 50% opacity. This ensures the weather display is visible while still having any ENC information being shown underneath. If for whatever reason the ENC or Weather information needs to be more prominent, this can be controlled by the "Display opacity" value in the settings tab

The screenshot shows the Weilbach software interface. On the left is a nautical chart with depth contours (e.g., 1000, 2000, 3000, 4000, 4222, 4660, 4898, 5000) and weather layers. A vessel icon is visible on the chart. On the right is a settings panel. The 'Weather' section has a blue arrow pointing to the 'Display opacity' dropdown, which is set to 0.10. Other settings include Length (232.0 m), Beam (32 m), GPS offset forward (0 m), GPS offset starboard (0 m), Route template (Standard), Auto-Route Settings (Open/Closed, Antipiracy Routing), NMEA Settings (Receive NMEA over UDP), and Backup/Restore.

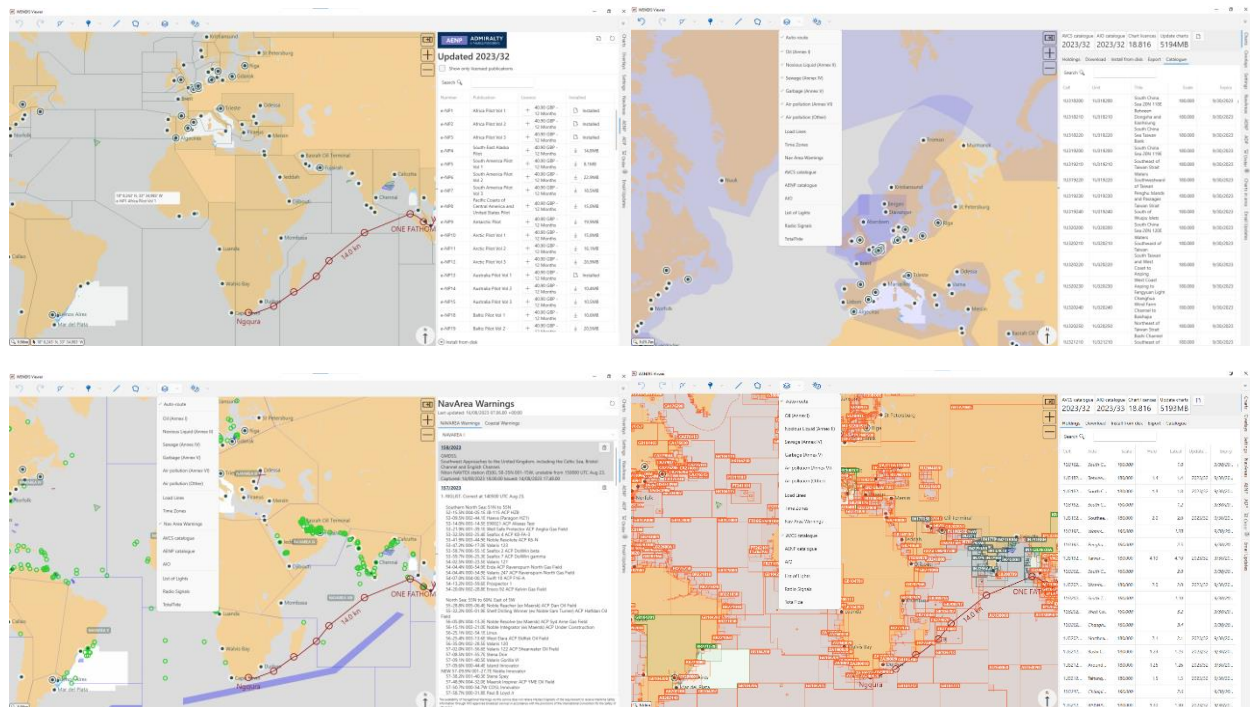


Weilbach®

NAUTICAL INSTRUMENTS DATA
CHARTS & BOOKS

10. Layers

Depending on your subscription, the layers menu may contain various options. To enable a layer simply click the *Layer* icon in the top menu, then select the desired layer.

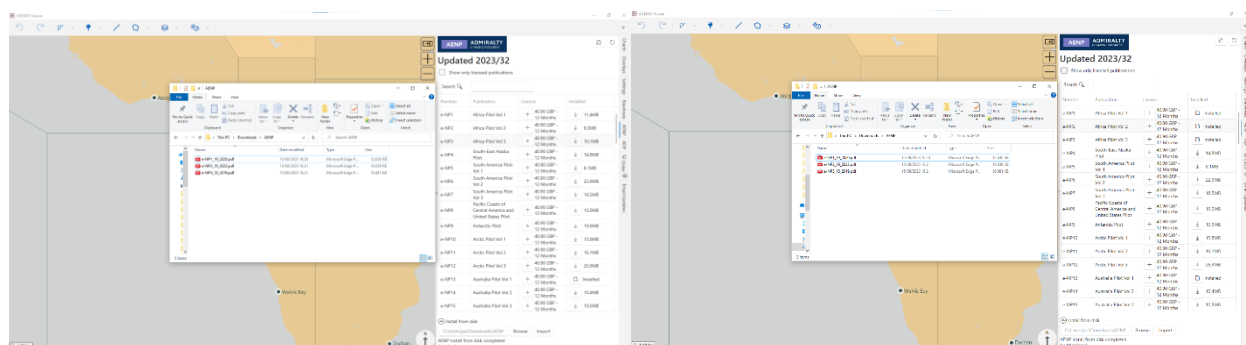




11. AENP

To view your AENP, go to the AENP pane, and double-click either the AENP number or the name of the AENP. The AENP should open shortly after.

As AENPs can be a heavy download, it may be advantages to import either all from disk, or just import the ones that you already have a permit for. To begin download the ANEPs to a local drive/folder, such as your Desktop. Then click *Install from disk*, then click browse and select the folder containing the AENPs, the click import.



To order an AENP, click the '+'-sign in the License column. Then click the shopping cart icon, to go to the *Order* pane. Then you can either request the AENP online, or create a purchase request file and send it to your AENP distributor.

Updated 2023/32

☐ Show only licensed publications

Number	Publication	License	Installed
e-NP1	Africa Pilot Vol 1		Installed
e-NP2	Africa Pilot Vol 2	40.90 GBP - 12 Months	Installed
e-NP3	Africa Pilot Vol 3	40.90 GBP - 12 Months	Installed
e-NP4	South-East Alaska Pilot	40.90 GBP - 12 Months	14.8MB
e-NP5	South America Pilot Vol 1	40.90 GBP - 12 Months	8.1MB
e-NP6	South America Pilot Vol 2	40.90 GBP - 12 Months	22.9MB

Order Admiralty e-Nautical Publications

Number	Publication	Duration	Price	
e-NP1	e-NP1 Africa Pilot Vol 1	12 months	£40.90	

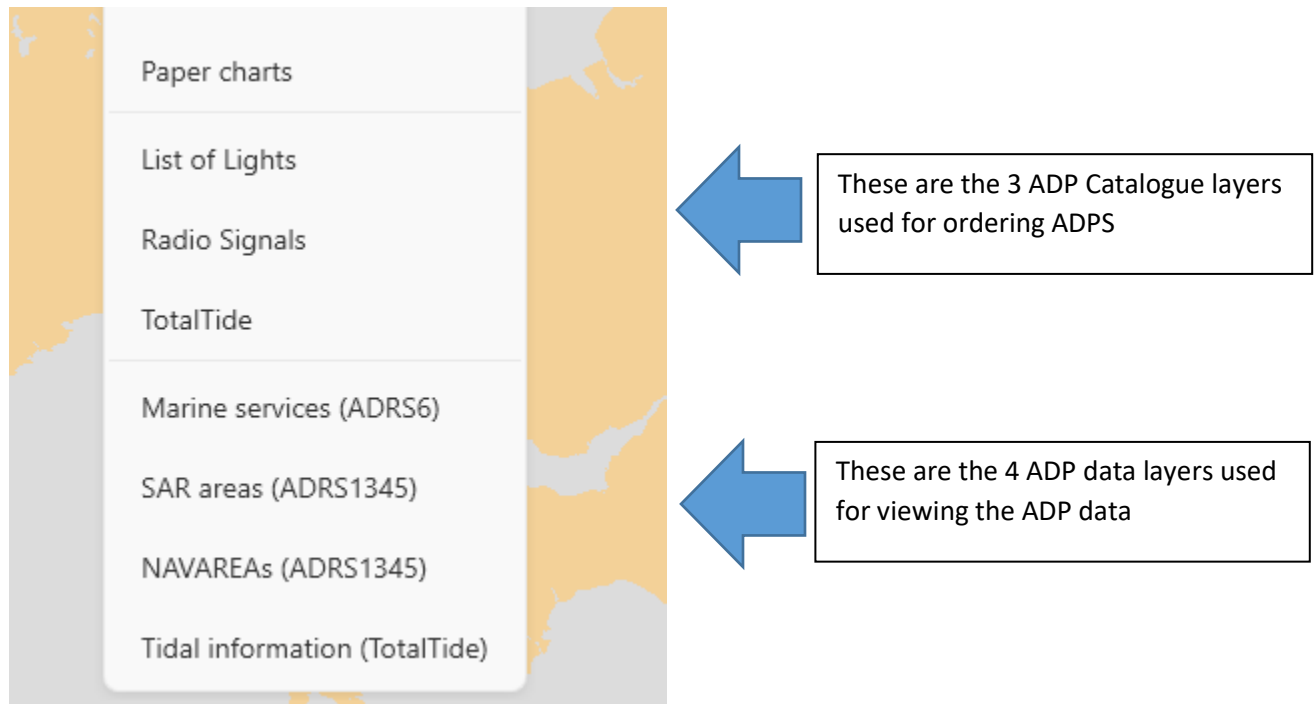
[Clear Items](#) [Request Online](#) [Save as File](#) [Copy list](#) [ADC basket](#)

Total £40.90



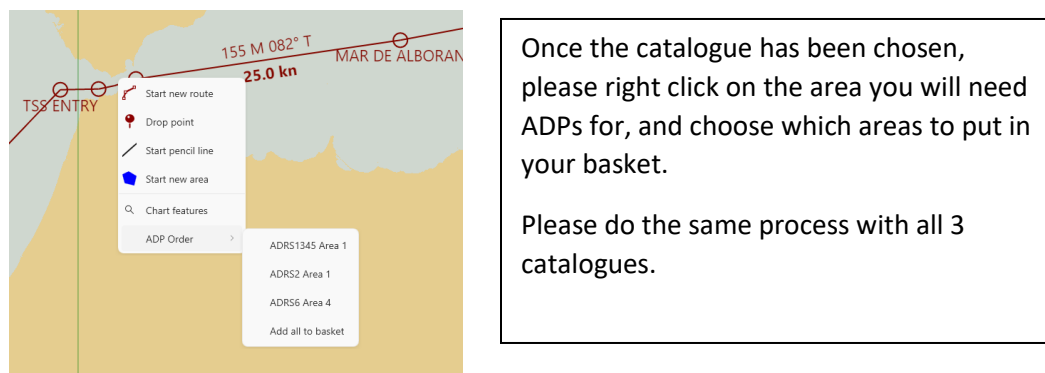
12. ADP

If you open the layer menu, then you can see below ADP layers.



12.1 Ordering of ADP

You are able to start ordering ADPs by clicking on either of the above-mentioned catalogue layers, doing so should split up world in green squares with each respective ADP area in the different area.





Weilbach®

NAUTICAL INSTRUMENTS DATA
CHARTS & BOOKS

Once you have placed all the ADPs required into your basket, then please click on “order” from the side bar to open the basket folder.

ADP Areas

Product	Area Name	Duration	Price	
ADLL	ADLL Area 4	12 months	£76.50	
ADRS	ADRS1345 Area 1	12 months	£306.20	
ADRS	ADRS2 Area 1	12 months	£76.50	
ADRS	ADRS6 Area 4	12 months	£76.50	
ATT	TotalTide Area 1 to 4	12 months	£76.50	

Charts

Overlays

Settings

NavAreas

AENP

ADP

Paper Charts

Order 5

Route

Email Updates

Clear Items

Request Online

Save as File

Copy list

ADC basket

Total £612.20

☐ Clear items after creating order?

You will need to use “Request online” if you want to send the order to your distributor via. Internet.

If you don’t have internet, then please click on “save as file”, copy list or ADC basket and send the order via. Email to your distributor.

After finalizing the order, then please clear items to prepare for the next order.

Alternatively see point 8.2 on how to order charts, AENPs & ADP’s using the route function.

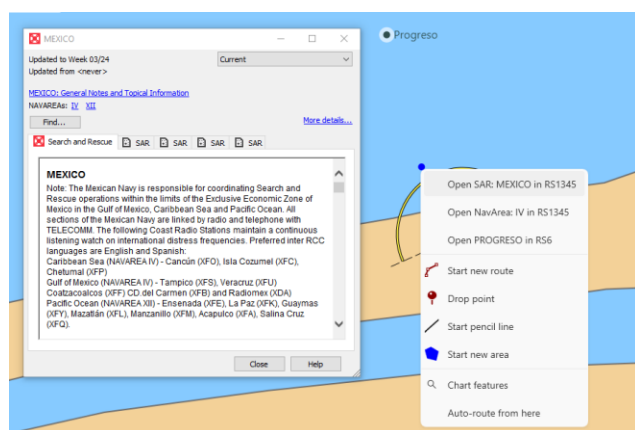


12.2 Viewing ADP

Once the required ADP's are ordered, then you will need to enable either of the required ADP layers from the layer menu.



Once a layer has been selected, then please scroll in to the area where you need ADP information from and preview the data directly from the WENDIS Viewer screen.





12.3 Updating ADP

You can update ADP directly through the software by clicking on the ADP menu in the side bar.

From here you are able update ADP or generate an ADP certificate directly via. The two buttons in the top right corner.

You can see the update status directly from the “updated to” menu as shown below.

ADP

ADP Licence Information

Search

Product	Area Name	Updated to	Expiry
ADLL	ADLL Area 3	2024/03	31/12/2024
ADLL	ADLL Area 4	2024/03	31/12/2024
ADLL	ADLL Area 5	2024/03	31/12/2024
ADLL	ADLL Area 6	2024/03	31/12/2024
ADLL	ADLL Area 7	2024/03	31/12/2024
ADLL	ADLL Area 8	2024/03	31/12/2024
ADLL	ADLL Area 9	2024/03	31/12/2024
ADLL	ADLL Area 10	2024/03	31/12/2024
ADLL	ADLL Area 1&2	2024/03	31/12/2024
ADRS	ADRS1345 Area 1	2024/03	31/12/2024
ADRS	ADRS1345 Area 2	2024/03	31/12/2024

Charts

Overlays

Settings

NavAreas

AENP

ADP

Order

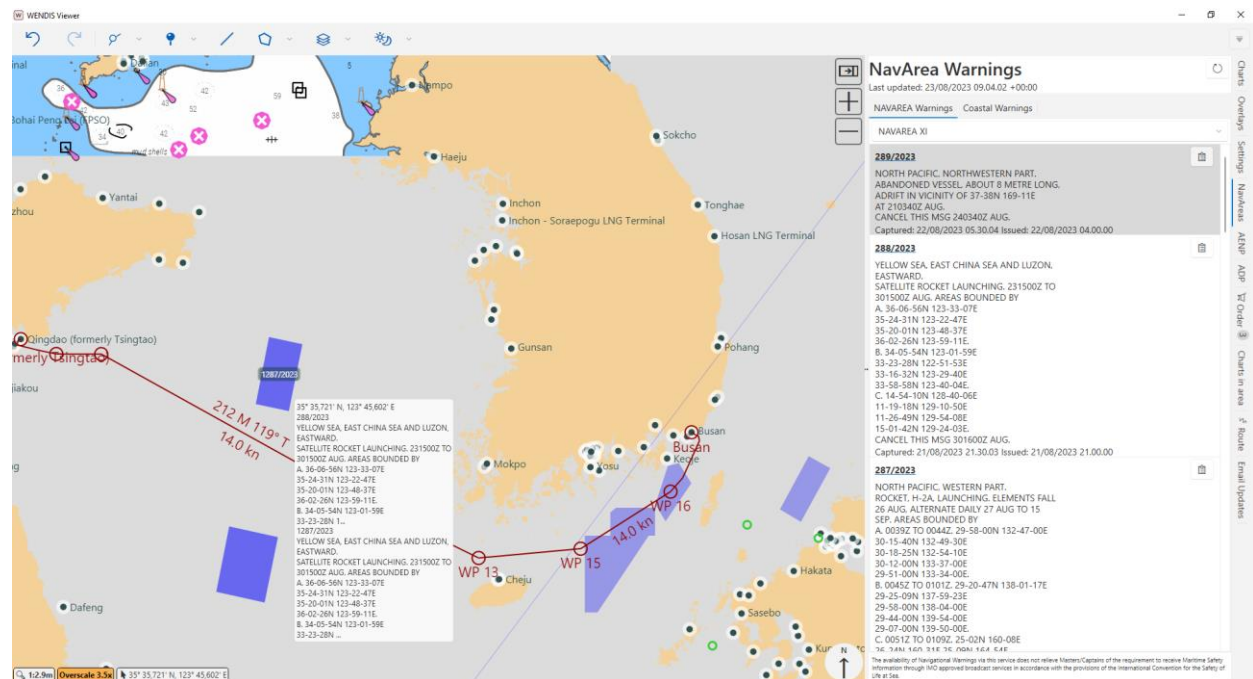
5 Route

Email Updates



13. NavArea

If your subscription contains NavArea warnings, it will become available both as a layer (mouse-over areas to view information), and available in the sidebar. Double-clicking individual warnings should center the chart on that particular warning. To update NavArea warning, simply click the *refresh* icon on the top right on the sidebar.





14. Paper chart catalogue

To enable the paper chart catalogue, please enter the “Settings” bar, and mark “Paper Charts Enabled” to toggle the catalogue and extra pane.

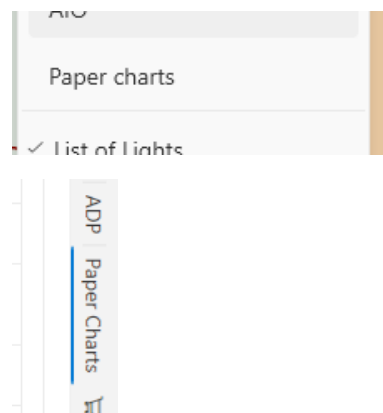
Online/Offline
☒ Online (use internet to stay up to date)
Online - Best unless you have no or poor internet connection

Subscription
Subscription until Thursday, 29 February 2024
Allianca Presentation (IMO1234567)
• Auto-Routing
• Environmental
• AENP
• NavAreas
Licence update files from your chart distributor may be dragged and dropped onto here.

Charts
Default ENC Licence: 9 Months
ENC update corridor (nm): 1.0
Safe Depth (m): 15
Paper Charts Enabled: ☐

Vessel

Charts Overlays Settings NavAreas AENP ADP Order Route Email



Once enabled 2 new menus will pop up in your software.

The first menu, is “Paper charts” within the layer menu, which can be used to toggle the paper charts catalogue within the chart screen.

The side menu “paper charts” are used to search the paper chart catalogue, and add different charts to the basket, which can be sent to your distributor.

NB: You cannot obtain Paper chart NtMs through the WENDIS Viewer.

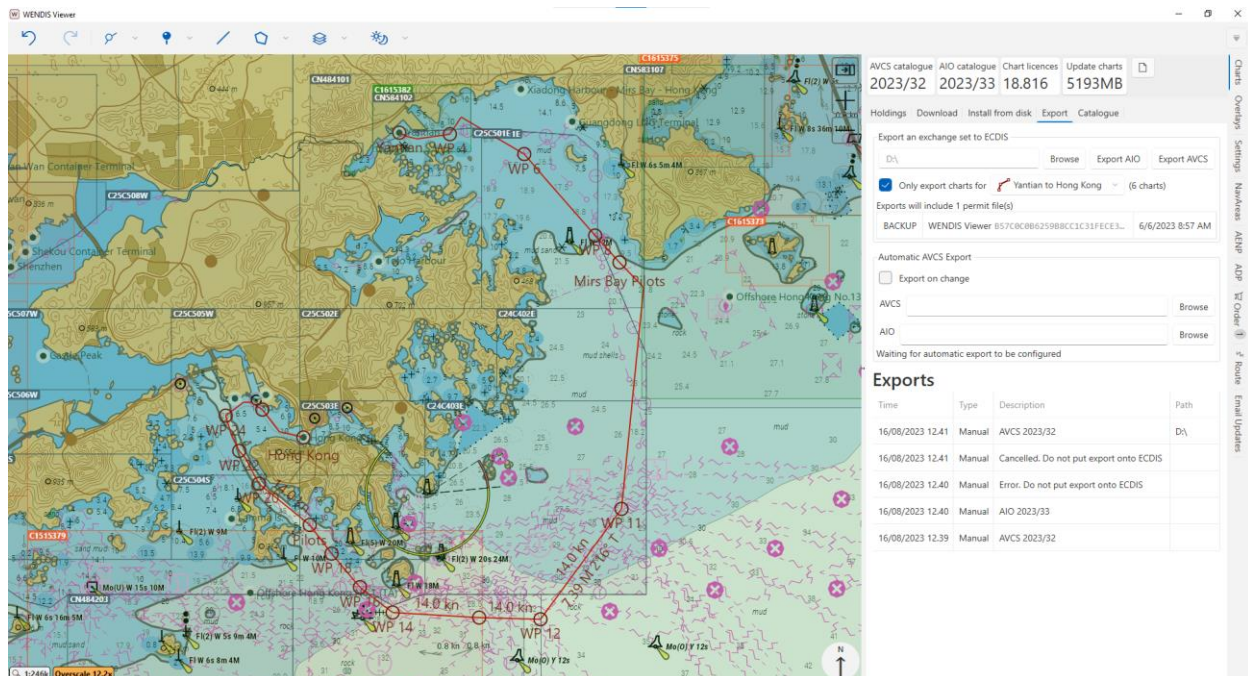
NTMs are obtained separately via. WENDIS PCUM or Admiralty website.



15. Exporting Exchange Sets

After opening the Charts sidebar, please make sure that you charts are up to date before exporting. Go to the *Export* pane. Browse to location where you want the exchange set to be located. Click export AVCS and wait for it to complete. After the exchange set has been created, please remember to review the Exports log, as it may contain warnings or error messages.

If you are using Admiralty Interface Overlay (AIO), you can export it from here as well.



Check list:

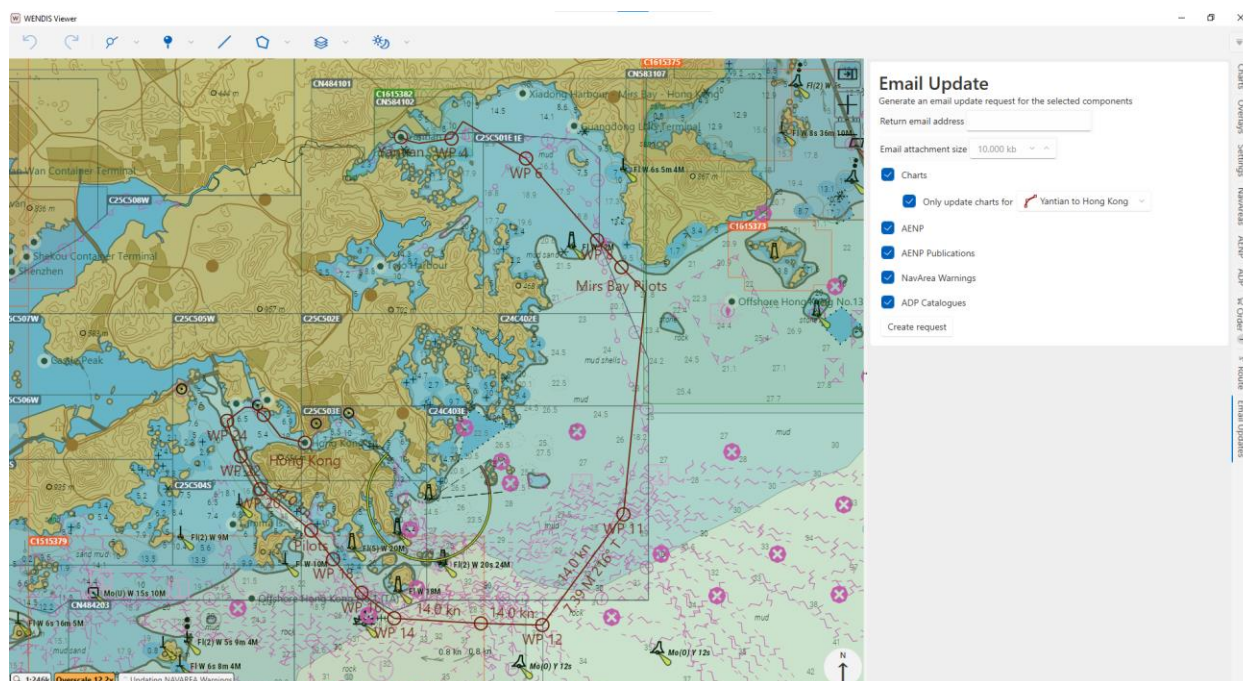
1. Make sure that your charts/AIO are up-to-date.
2. Check that the location for the exchange set is available (if exporting directly to USB, make sure it has been inserted into the PC)
3. If exporting charts only for a specific route or area, make sure that it is checked and that the correct route or area has been selected.
4. When the export of AIO or AVCS has completed, check the export log for errors or warnings.



16. Email updating

If WENDIS Viewer is in offline mode, you will still be able to update WENDIS Viewer via email. To do this start by opening the *Email Updates* in the sidebar.

Before creating the email update request, please remember to check that the return email address and email attachment size has been set correctly. A smaller email attachment size may increase the number of emails received. If you enable charts for updating, and you've made a route or area, you'll be given the option to only request charts for a specific route or area.



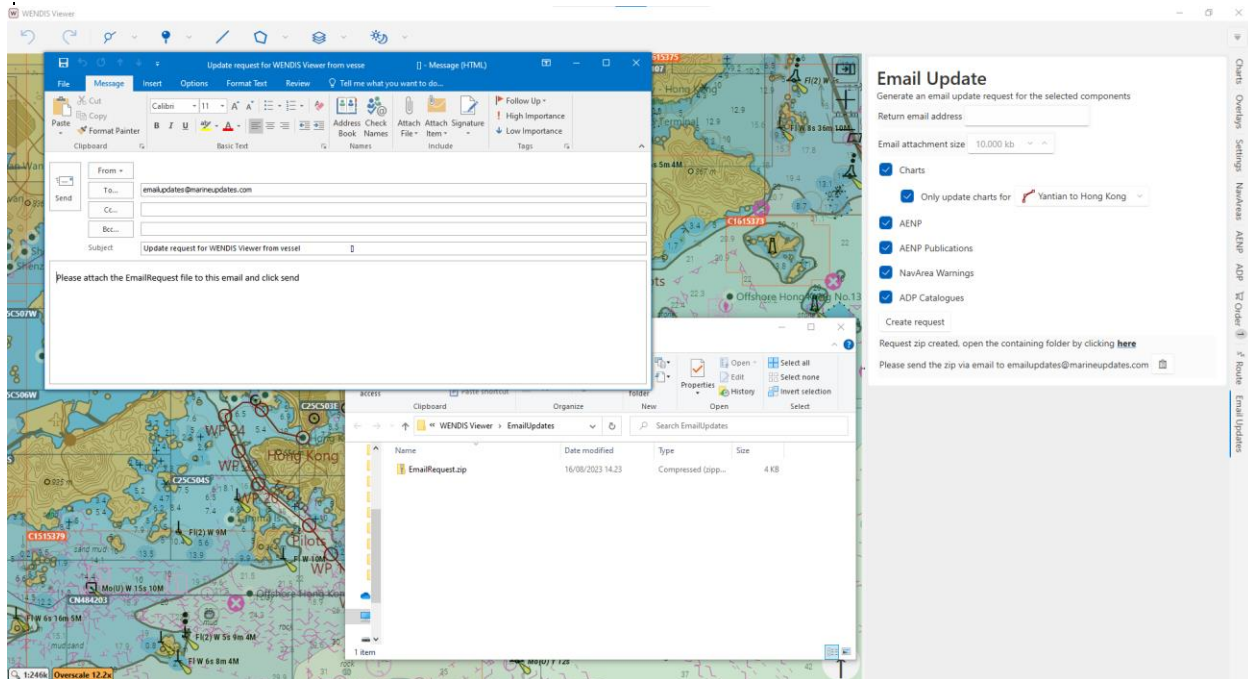
To start the update process, select the components that you would like to update, then click *Create request*.

Once you click the *Create request* button, the default mail application and an Explorer window will open automatically with a zip-file called 'EmailRequest.zip'. If the computer you are on does not have an active email, you may transfer the file to another computer via USB. Then simply attach the file to an email and send it to emailupdates@marineupdates.com.



Weilbach®

NAUTICAL INSTRUMENTS DATA
CHARTS & BOOKS



After sending the email EmailRequest.zip you should receive a response within the next few minutes. Please note that sender email and the return email address does not have to be the same email address.

The zip-file you receive back as a reply, can be drag-and-dropped into the Viewer, and it will start updating process.

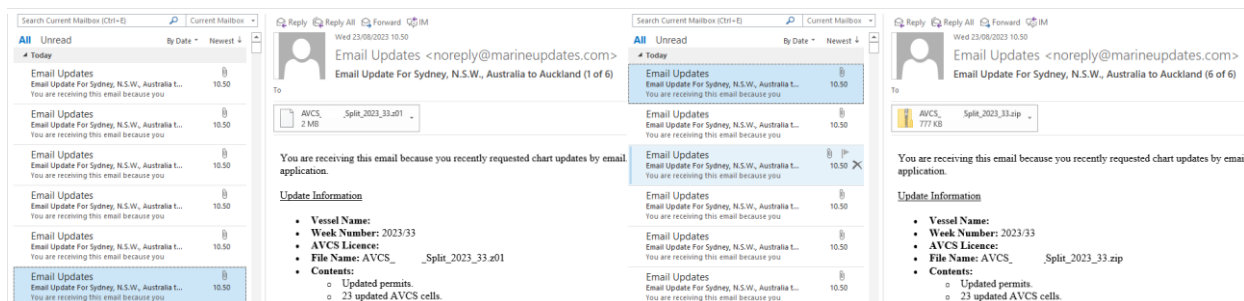
In case the update size, exceeds the email attachment size, you will receive one .zip file, and one or more .zXX file(s). Simply download all the files to same folder, the drag-and-drop the .zip file into the Viewer. The Viewer will auto-detect the other .zXX files and import them as well.



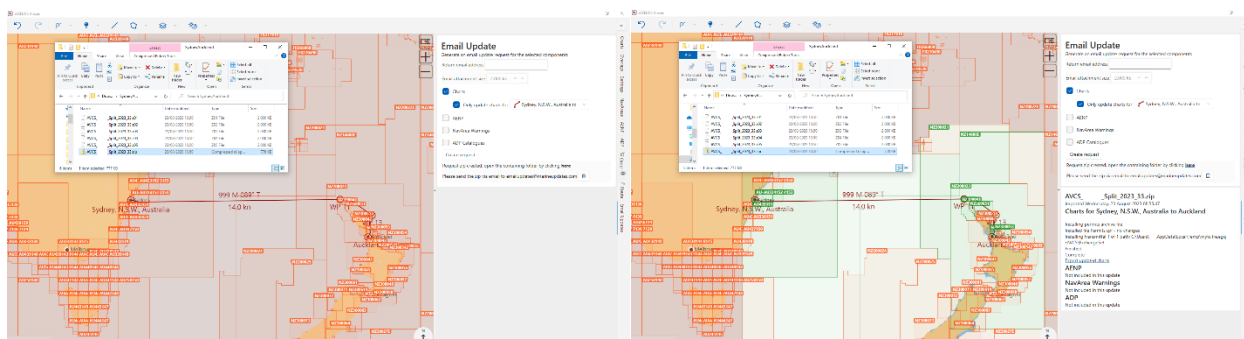
Weilbach®

NAUTICAL INSTRUMENTS DATA
CHARTS & BOOKS

In the example below, 6 update emails are generated for a route from Sydney to Auckland. Note that the email subject field contains the number of emails/files you should receive for the requested update.



The first steps is to download all 6 files to the same folder. Then drag-and-drop only the .zip file into WENDIS Viewer. If the update is successful, an exchange set can be created directly, by clicking *Export updated charts*.





17. Support

17.1 Make Support Message

To create a support message start by opening the *Settings* pane and then click *Make support message*.

Help and Support

[Make support message](#)

[Explore data folders](#)

[Connection test page](#)

The error log file is always included, if there is a need for additional information, please make sure to set checks as appropriate.

Help and Support

[Make support message](#)

Select extra information to include (error info always included)

☒ Charts

☐ AENP information

☒ Charts (extra detail)

Make support message

[Explore data folders](#)

[Connection test page](#)

Once you click the *Make support message* button. An *Explorer* window with the zip file will appear and the default email application will open create a message, that you may attach the support zip to. If this is an offline computer, please copy the .zip file, to the appropriate computer and send the .zip file to the support team.



Help and Support

[Make support message](#)

Attach the zip file **20230814T103023Z_Support.zip** and email to **support@weilbach.com**

[Explore data folders](#)

[Connection test page](#)

17.2 Explore data folders

The *Explore data folders* button, will open an *Explorer* window in the C:\ProgramData\CHERSOFT\WENDIS Viewer folder. This shortcut is mainly useful, when there is a need to directly access files generated by/in WENDIS Viewer.

17.3 Connection test page

If WENDIS Viewer is unable to update or download items, it might be a good idea to check the WENDIS Viewer internet connection, as it may help isolate issues with updating and downloading.